

PREPARATION AND DISTRIBUTION



PRICE LIST - October 2011





We present the EDESA price list with the new prices from October 2011.

To facilitate the search of the articles in this list, all products are sorted according to the EDESA Catalogue 2009. In addition, each article includes the catalogue page 2009 where to find it.

In this price list you will find also the new products of the DROP-IN line for buffets, and the Gastrobuffet elements of the JUNO and VULCANO series.





Page Catalogue	Reference	Article - Model	Price € Nov 2011
----------------	-----------	-----------------	---------------------

SINKS

Sinks - 600 Series

10	1113101	SINK FI-66/10 (600x600)	420,00
	1113102	SINK FI-76/10 (700x600)	426,00
	1113103	SINK FI-106/11D (1000x600)	441,00
	1113104	SINK FI-106/11I (1000x600)	441,00
	1113105	SINK FI-126/11D (1200x600)	541,00
	1113106	SINK FI-126/11I (1200x600)	541,00
	1113107	SINK FI-136/11D (1300x600)	546,00
	1113108	SINK FI-136/11I (1300x600)	546,00
	1113109	SINK FI-106/20 (1000x600)	630,00
	1113110	SINK FI 126/20 (1200x600)	709,00
	1113111	SINK FI-136/20 (1300x600)	735,00
	1113112	SINK FI-146/21D (1400x600)	678,00
	1113113	SINK FI-146/21I (1400x600)	678,00
	1113114	SINK FI-166/21D (1600x600)	804,00
	1113115	SINK FI-166/21I (1600x600)	804,00
	1113116	SINK FI-186/21D (1800x600)	840,00
	1113117	SINK FI-186/21I (1800x600)	840,00
	1113118	SINK FI-206/22 (2000x600)	935,00
	1113119	SINK FI-256/22 (2500x600)	940,00



Sinks - 700 Series

11	1123101	SINK FI-77/10 (700x700)	452,00
	1123102	SINK FI-87/10 (800x700)	552,00
	1123103	SINK FI-127/11D (1200x700)	557,00
	1123104	SINK FI-127/11I (1200x700)	557,00
	1123105	SINK FI-147/11D (1400x700)	667,00
	1123106	SINK FI-147/11I (1400x700)	667,00
	1123107	SINK FI-127/20 (1200x700)	746,00
	1123108	SINK FI-147/20 (1400x700)	924,00
	1123109	SINK FI-187/21D (1800x700)	930,00
	1123110	SINK FI-187/21I (1800x700)	930,00
	1123111	SINK FI-217/21D (2100x700)	1.161,00
	1123112	SINK FI-217/21I (2100x700)	1.161,00
	1123113	SINK FI-257/22 (2500x700)	1.166,00
	1123114	SINK FI-267/22 (2600x700)	1.171,00
	1133107	SINK FI-187/30 (1800x700)	1.197,00



Sinks - High Capacity

12	1133101	SINK FI-107/10 (1000x700)	882,00
	1133102	SINK FI-147/10 (1400x700)	1.155,00
	1133103	SINK FI-167/11D (1600x700)	1.019,00
	1133104	SINK FI-167/11I (1600x700)	1.019,00
	1133105	SINK FI-187/11D (1800x700)	1.176,00
	1133106	SINK FI-187/11I (1800x700)	1.176,00
	1133108	SINK FI-187/20 (1800x700)	1.418,00
	1133107	SINK FI-187/30 (1800x700)	1.197,00



Frames for sinks

13	1212101	FRAME BF-66 (600X600)	237,00
	1212102	FRAME BF-76 (700X600)	242,00
	1212103	FRAME BF-106 (1000X600)	263,00
	1212104	FRAME BF-126 (1200X600)	284,00
	1212105	FRAME BF-136 (1300X600)	305,00
	1212106	FRAME BF-146 (1400X600)	315,00
	1212107	FRAME BF-166 (1600X600)	331,00
	1212108	FRAME BF-186 (1800X600)	336,00
	1212109	FRAME BF-206 (2000X600)	368,00
	1212110	FRAME BF-256 (2500X600)	431,00



Page Catalogue	Reference	Article - Model	Price € Nov 2011
	1222101	FRAME BF-77 (700x700)	247,00
	1222102	FRAME BF-87 (800x700)	252,00
	1222103	FRAME BF-107 (1000x700)	280,00
	1222104	FRAME BF-127 (1200x700)	293,00
	1222105	FRAME BF-147 (1400x700)	300,00
	1222106	FRAME BF-167 (1600x700)	310,00
	1222107	FRAME BF-187 (1800x700)	347,00
	1222108	FRAME BF-217 (2100x700)	378,00
	1222109	FRAME BF-257 (2500x700)	452,00
	1222110	FRAME BF-267 (2600x700)	457,00

Low rack for frames



13	1242101	LOW RACK FOR FRAME EB-66 (600X600)	84,00
	1242102	LOW RACK FOR FRAME EB-76 (700X600)	95,00
	1242103	LOW RACK FOR FRAME EB-106 (1000X600)	142,00
	1242104	LOW RACK FOR FRAME EB-126 (1200X600)	153,00
	1242105	LOW RACK FOR FRAME EB-136 (1300X600)	163,00
	1242106	LOW RACK FOR FRAME EB-146 (1400X600)	174,00
	1242107	LOW RACK FOR FRAME EB-166 (1600X600)	195,00
	1242108	LOW RACK FOR FRAME EB-186 (1800X600)	226,00
	1242109	LOW RACK FOR FRAME EB-206 (2000X600)	247,00
	1242110	LOW RACK FOR FRAME EB-256 (2500X600)	310,00
	1242115	LOW RACK FOR FRAME EB-77 (700X700)	116,00
	1242116	LOW RACK FOR FRAME EB-87 (800X700)	126,00
	1242117	LOW RACK FOR FRAME EB-107 (1000X700)	158,00
	1242118	LOW RACK FOR FRAME EB-127 (1200X700)	179,00
	1242119	LOW RACK FOR FRAME EB-147 (1400X700)	200,00
	1242120	LOW RACK FOR FRAME EB-167 (1600X700)	242,00
	1242121	LOW RACK FOR FRAME EB-187 (1800X700)	268,00
	1242122	LOW RACK FOR FRAME EB-217 (2100X700)	326,00
	1242123	LOW RACK FOR FRAME EB-257 (2500X700)	378,00
	1242124	LOW RACK FOR FRAME EB-267 (2600X700)	389,00

Frames for dishwashers



14	1222119	FRAME FOR DISHWASHER BF-126-L (1200x600)	321,00
	1222120	FRAME FOR DISHWASHER BF-127-L (1200x700)	347,00
	1222121	FRAME FOR DISHWASHER BF-186-L (1800x600)	452,00
	1222122	FRAME FOR DISHWASHER BF-187-L (1800x700)	468,00
	1892123	CONJUNTO NIVELACIÓN ALTURA 2 PATAS KMPL-2	13,00

Sinks welded to a frame 500 mm depth (without rack)



	1153001	SINK WITH WELDED FRAME FSB-85/11-D (800X500)	329,00
	1153002	SINK WITH WELDED FRAME FSB-85/11-I (800X500)	329,00
	1153003	SINK WITH WELDED FRAME FSB-105/11-D (1000X500)	334,00
	1153004	SINK WITH WELDED FRAME FSB-105/11-I (1000X500)	334,00
	1153005	SINK WITH WELDED FRAME FSB-125/21-D (1200X500)	412,00
	1153006	SINK WITH WELDED FRAME FSB-125/21-I (1200X500)	412,00
	1153011	SINK WITH WELDED FRAME FSB-135/21-D (1350X500)	453,00
	1153012	SINK WITH WELDED FRAME FSB-135/21-I (1350X500)	453,00

Sinks welded to a frame 500 mm depth (with rack)



For glasswashers

	1153007	SINK WITH WELDED FRAME FSBE-105-LD (1000X500)	420,00
	1153008	SINK WITH WELDED FRAME FSBE-105-LI (1000X500)	420,00
	1153009	SINK WITH WELDED FRAME FSBE-135-LD (1350X500)	570,00
	1153010	SINK WITH WELDED FRAME FSBE-135-LI (1350X500)	570,00

Sinks welded to a frame 550 mm depth (without rack)



	1153020	SINK WITH WELDED FRAME FSB-1255/11-D (1200X550)	517,00
	1153021	SINK WITH WELDED FRAME FSB-1255/11-I (1200X550)	517,00



Page Catalogue	Reference	Article - Model	Price € Nov 2011
----------------	-----------	-----------------	---------------------

Sinks welded to a frame 550 mm depth (with rack)

For glasswashers and dishwashers

1153024	SINK WITH WELDED FRAME FSBE-1255-LD (1200X550)	572,00
1153025	SINK WITH WELDED FRAME FSBE-1255-LI (1200X550)	572,00



Frames with doors for sinks

15	1232102	FRAME WITH SLIDING DOORS BFP-126 (1200x600)	1.155,00
	1232106	FRAME WITH SLIDING DOORS BFP-166 (1600x600)	1.313,00
	1232104	FRAME WITH SLIDING DOORS BFP-127 (1200x700)	1.208,00
	1232105	FRAME WITH SLIDING DOORS BFP-187 (1800x700)	1.365,00

Supports for hanging sinks

15	1142101	SUPPORT HANGING SINK -SOP	172,00
----	---------	---------------------------	--------



Sink drainingboard

16	1133109	SINK DRAINING BOARD FI-147-ESC (1400x700)	1.245,00
	1222105	FRAME BF-147 (1400x700)	300,00

Waste sink

16	1113120	WASTE SINK FV-66 (600x600)	531,00
----	---------	----------------------------	--------

Perforated bottom for sink

16	1142103	PERFORATED BOTTOM FPF-55-D (500x500)	69,00
	1142104	PERFORATED BOTTOM FPF-55-I (500x500)	69,00
	1142105	PERFORATED BOTTOM FPF-65-D (600x500)	79,00
	1142106	PERFORATED BOTTOM FPF-65-I (600x500)	79,00
	1142107	PERFORATED BOTTOM FPF-85-D (800x500)	100,00
	1142108	PERFORATED BOTTOM FPF-85-I (800x500)	100,00
	1892123	LEGS (2 UNITS)	13,00

Overflow tubes and drainage valves

16	1142110	OVERFLOW TUBE AND DRAINAGE VALVE TRV-25	42,00
	1142111	OVERFLOW TUBE AND DRAINAGE VALVE TRV-30	48,00



Workbenches with sink and drainage valve

17	1123117	With sink and waste disposal hole EFD-147 (1400x700)	567,00
	1113122	With sink, draining board, and waste disposal hole EFDL-186-D (1800x600)	777,00
	1113123	With sink, draining board, and waste disposal hole EFDL-186-I (1800x600)	777,00
	1123118	With sink, draining board, and waste disposal hole EFDL-187-D (1800x700)	830,00
	1123119	With sink, draining board, and waste disposal hole EFDL-187-I (1800x700)	830,00
	1232101	FRAME FOR SINK EFD-147 MODEL BMPV-147 (1400x700)	315,00
	1232107	FRAME FOR SINK EFDL-186 MODEL BEFDL-186 (1800x600)	357,00
	1232108	FRAME FOR SINK EFDL-187 MODEL BEFDL-187 (1800x700)	373,00
	1892123	Level Kit KMPL-2	13,00



Preparation tables for vegetables, meat and fish

18	1123116	PREPARATION TABLE FOR MEAT ANF FISH, MPC-147 (1400x700)	945,00
	1123115	PREPARATION TABLE FOR VEGETABLES, MPV-147 (1400x700)	1.029,00
	1232101	FRAME FOR TABLES MPC-147 AND MPV-147 MODEL BMPV-147 (1400x700)	300,00



Page Catalogue	Reference	Article - Model	Price € Nov 2011
----------------	-----------	-----------------	---------------------

HAND BASINS

Wall hand basins with push system

1416111	WALL HAND BASIN LM-33 (300x315x170)	219,00
1416112	WALL HAND BASIN LM-44 (400x400x170)	243,00

Hand basins with pedestal and push system

1416113	HAND BASIN LP-44 (400x400x850 mm)	345,00
---------	-----------------------------------	--------

Hand basins

19	1426101	WALL HAND BASIN LB-P	111,00
	1426102	WALL HAND BASIN LB-G	132,00
	1426103	WALL HAND BASIN LB-43	153,00
	1426106	WALL HAND BASIN SL-43	105,00
	1426104	WALL HAND BASIN LB-535	231,00
	1426105	WALL HAND BASIN SL-535	153,00
20	1413102	WALL HAND BASIN LM-54	399,00
	1413105	WALL HAND BASIN WITH SOAP DOSER LM-54-D	452,00
	1413107	WALL HAND BASIN WITH ELECTRONIC TAP LM-54-EL	683,00
	1413108	WALL HAND BASIN W/ ELECTRONIC TAP AND SOAP DOSER LM-54-EL-D	767,00
	1413103	WALL HAND BASIN LM-43	378,00

Wall hand basins with pedal

20	1416106	WALL HAND BASIN WITH PEDAL LMP-54	636,00
----	---------	-----------------------------------	--------

Hand basins with pedestal and pedal

21	1413101	HAND BASIN LP-54	557,00
	1413104	HAND BASIN WITH SOAP DISPENSER LP-54-D	636,00
	1413109	HAND BASIN WITH ELECTRONIC TAP LP-54-EL	1.008,00
	1413110	HAND BASIN WITH ELECTRONIC TAP AND DOSER LP-54-EL-D	1.035,00

Rear guard for hand basins

21	1432101	REAR GUARD PLM-5 (FOR LP-54 AND LM-54)	95,00
	1436102	REAR GUARD PLM-4 (FOR LP-44 AND LM-44)	95,00

SINKS AND TAPS

Shower taps

23	1316101	SHOWER TAP 1 WATER SUPPLY DIRECT GDS	376,00
	1316102	SHOWER TAP 1 WATER SUPPLY GD1	394,00
	1316103	SHOWER TAP 2 WATER SUPPLIES GD2	452,00
24	1316104	SHOWER TAP 2 WATER SUPPLIES WITH PIPE GD2C	588,00
	1316120	SHOWER TAP SINGLE LEVER - 2 WATER SUPPLIES GDM2	473,00
	1316121	SHOWER TAP SINGLE LEVER - 2 WATER SUPPLIES WITH PIPE GDM2C	625,00
	1316146	SHOWER TAP 2 WATER SUPPLIES - THERMOSTÁTIC - W/ PIPE GDMT2C	756,00
	1316105	SHOWER TAP 2 WATER SUPPLIES - 2 BRACKETS GD2D	510,00
	1316122	SHOWER TAP 2 WATER SUPPLIES - WALL TYPE GDP2	536,00
25	1316127	SHOWER TAP 2 WATER SUPPLIES - WALL TYPE WITH PIPE GDP2C	662,00
	1316128	SHOWER TAP SINGLE LEVER - 2 WATER SUP. - WALL - W/PIPE GDPM2C	830,00
	1316113	TAP MONOBLOCK COLUMN 2 WATER SUPPLIES GB-CL-30	277,00
	1316114	TAP 90° COLUMN 1 WATER SUPPLY GB-CL-70	410,00



Page Catalogue	Reference	Article - Model	Price € Nov 2011
Taps			
	26	1316106 TAP SINGLE LEVER - 2 WATER SUPPLIES - FRONT LEVER GMF-30	210,00
		1316147 TAP THERMOSTATIC - FRONT LEVER GMTF-30	279,00
		1316107 TAP SINGLE LEVER 2 WATER SUPPLIES - SIDE LEVER GML-30	216,00
		1316108 TAP SINGLE LEVER 2 WATER SUPPLIES GB-30	184,00
		1316141 TAP SINGLE LEVER 2 WATER SUPPLIES - HIGH LEVER GM-PL-30	205,00
		1316109 TAP SINGLE LEVER 2 WATER SUPPLIES - HIGH LEVER FOR BASIN GM-12	184,00
		1316145 TAP SINGLE LEVER 2 WATER SUPPLIES - LOW PIPE GM-CB-16	195,00
	27	1316123 TAP SINGLE LEVER 2 WATER SUPPLIES - REMOVABLE SHOWER GM2DE	300,00
		1316110 TAP SINGLE LEVER 2 WATER SUPPLIES - DOUBLE SUPPORT GD-30	226,00
		1316152 SHOWER TAP SINGLE LEVER 2 WATER SUPPLIES - WALL SUPPORT GDHM2	210,00
		1316125 TAP SINGLE LEVER 1 WATER SUPPLY - ROTATING PIPE GM1-30	174,00
		1316124 TAP SINGLE LEVER 1 WATER SUPPLY - HIGH ROTATING PIPE GM1-20	168,00
		1316126 WALL TAP 2 WATER SUPPLIES G2P-30	242,00
		1316112 WALL TAP SINGLE LEVER 2 WATER SUPPLIES LONG ERGONOMIC LEVER GMP-30	237,00
	28	1316148 LOW TAP - TIMED - FOR HAND BASINS G1T-9	74,00
		1316149 HIGH TAP - TIMED - FOR HAND BASINS G1T-23	69,00
	1316136 TIMED PRESS BUTTON TAP G1T2	147,00	
Electronic taps			
	29	1315119 ELECTRONIC TAP - IR SENSOR-OPERATED CEL-12	431,00
		1315142 ELECTRONIC TAP - IR SENSOR-OPERATED CEL-12-P	441,00
		1315143 ELECTRONIC TAP - IR SENSOR-OPERATED CEL-18	468,00
		1315144 ELECTRONIC TAP - IR SENSOR-OPERATED CEL-18-P	489,00
Taps with pedal			
	30	1316129 TAP 1 PEDAL - 1 WATER SUPPLY - FLOOR OR WALL G1P1S	111,00
		1316130 TAP 1 PEDAL - 2 WATER SUP. - SELF-MIXER - WALL OR FLOOR G1P2S	142,00
		1316133 TAP 1 PEDAL - 2 WATER SUP. - SELF-MIXER - FLOOR - BLOCKING PEDAL G2P2S	268,00
		1316134 TAP 1 PEDAL - 2 WATER SUP. - SELF-MIXER - WALL - BLOCKING PEDAL G2P2P	268,00
		1316135 TAP 1 PEDAL - 2 WATER SUP. - SELF-MIXER - HANGING - BLOCKING PEDAL G2P2U	289,00
Taps knee operated			
	30	1316131 TAP KNEE OPERATED 1 WATER SUPPLY - TIMED G1R1	111,00
		1316132 TAP KNEE OPERATED 2 WATER SUPPLIES - MIXER - TIMED G1R2	153,00
Extensible tap			
	31	1316153 EXTENSIBLE TAP 6 MTS. GX-60	783,00
		1316154 EXTENSIBLE TAP 10 MTS. GX-100	1.344,00
		1316155 EXTENSIBLE TAP 15 MTS. GX-150	1.775,00
Accessories			
	32	1316115 SHOWER FOR DISHWASHER / VEGETABLE WASHER GR	116,00
		1316116 SHOWER FOR DISHWASHER GRN	116,00
		1316117 STAINLESS STEEL FLEXIBLE PIPE FXI-100	32,00
		1313118 PIPE FOR HAND BASIN CL-20	21,00
		1316157 WALL SHOWER GR-GDH	53,00
		1316158 FLEXIBLE 1 METRE FX-GDH	27,00
		1316160 GUN FOR EXTENSIBLE TAP GX-P	221,00
	1316161 HIGH PRESSURE SPEAR 450 mm GX-L	58,00	
Display stand for taps			
32	1315200	DISPLAY STAND EXP-GRI	735,00



Page Catalogue	Reference	Article - Model	Price € Nov 2011
----------------	-----------	-----------------	---------------------

TABLES

Central tables with low shelf

Assembled tables - 600 range



36	1812101	CENTRAL TABLE MC-106 (1000x600)	462,00
	1812102	CENTRAL TABLE MC-126 (1200x600)	515,00
	1812103	CENTRAL TABLE MC-146 (1400x600)	546,00
	1812104	CENTRAL TABLE MC-166 (1600x600)	594,00
	1812105	CENTRAL TABLE MC-186 (1800x600)	657,00
	1812106	CENTRAL TABLE MC-206 (2000x600)	699,00
	1812107	CENTRAL TABLE MC-246 (2400x600)	788,00

Assembled tables - 700 range



36	1812108	CENTRAL TABLE MC-107 (1000x700)	504,00
	1812109	CENTRAL TABLE MC-127 (1200x700)	562,00
	1812110	CENTRAL TABLE MC-147 (1400x700)	599,00
	1812111	CENTRAL TABLE MC-167 (1600x700)	683,00
	1812112	CENTRAL TABLE MC-187 (1800x700)	741,00
	1812113	CENTRAL TABLE MC-207 (2000x700)	788,00
	1812114	CENTRAL TABLE MC-247 (2400x700)	935,00

Dissambled tables - 600 range



36	1822101	DISSAMBLED CENTRAL TABLE MCD-106 (1000x600)	473,00
	1822102	DISSAMBLED CENTRAL TABLE MCD-126 (1200x600)	494,00
	1822103	DISSAMBLED CENTRAL TABLE MCD-146 (1400x600)	546,00
	1822104	DISSAMBLED CENTRAL TABLE MCD-166 (1600x600)	588,00
	1822105	DISSAMBLED CENTRAL TABLE MCD-186 (1800x600)	630,00
	1822106	DISSAMBLED CENTRAL TABLE MCD-206 (2000x600)	683,00
	1822107	DISSAMBLED CENTRAL TABLE MCD-246 (2400x600)	788,00

Dissambled tables - 700 range



36	1822108	DISSAMBLED CENTRAL TABLE MCD-107 (1000x700)	515,00
	1822109	DISSAMBLED CENTRAL TABLE MCD-127 (1200x700)	536,00
	1822110	DISSAMBLED CENTRAL TABLE MCD-147 (1400x700)	609,00
	1822111	DISSAMBLED CENTRAL TABLE MCD-167 (1600x700)	662,00
	1822112	DISSAMBLED CENTRAL TABLE MCD-187 (1800x700)	714,00
	1822113	DISSAMBLED CENTRAL TABLE MCD-207 (2000x700)	788,00
	1822114	DISSAMBLED CENTRAL TABLE MCD-247 (2400x700)	935,00

Stainless steel Drawers



36	1892101	DISSAMBLED DRAWER KIT FOR 600 RANGE	CM-6	158,00
	1892102	DISSAMBLED DRAWER KIT FOR 700 RANGE	CM-7	163,00
	1892121	ASSEMBLED DRAWER FOR 600 RANGE	CMM-6	174,00
	1892122	ASSEMBLED DRAWER FOR 700 RANGE	CMM-7	179,00

Wall tables with low shelf

Assembled tables - 600 range



37	1832101	WALL TABLE MM-106 (1000x600)	478,00
	1832102	WALL TABLE MM-126 (1200x600)	531,00
	1832103	WALL TABLE MM-146 (1400x600)	588,00
	1832104	WALL TABLE MM-166 (1600x600)	646,00
	1832105	WALL TABLE MM-186 (1800x600)	709,00
	1832106	WALL TABLE MM-206 (2000x600)	767,00
	1832107	WALL TABLE MM-246 (2400x600)	909,00

Assembled tables - 700 range



37	1832108	WALL TABLE MM-107 (1000x700)	525,00
	1832109	WALL TABLE MM-127 (1200x700)	588,00
	1832110	WALL TABLE MM-147 (1400x700)	646,00
	1832111	WALL TABLE MM-167 (1600x700)	704,00
	1832112	WALL TABLE MM-187 (1800x700)	783,00
	1832113	WALL TABLE MM-207 (2000x700)	861,00
	1832114	WALL TABLE MM-247 (2400x700)	1.003,00



Page Catalogue	Reference	Article - Model	Price € Nov 2011
----------------	-----------	-----------------	---------------------

Dissambled tables - 600 range

37	1842101	DISSAMBLE WALL TABLE MMD-106 (1000x600)	483,00
	1842102	DISSAMBLE WALL TABLE MMD-126 (1200x600)	536,00
	1842103	DISSAMBLE WALL TABLE MMD-146 (1400x600)	557,00
	1842104	DISSAMBLE WALL TABLE MMD-166 (1600x600)	620,00
	1842105	DISSAMBLE WALL TABLE MMD-186 (1800x600)	678,00
	1842106	DISSAMBLE WALL TABLE MMD-206 (2000x600)	730,00
	1842107	DISSAMBLE WALL TABLE MMD-246 (2400x600)	872,00



Dissambled tables - 700 range

37	1842108	DISSAMBLE WALL TABLE MMD-107 (1000x700)	536,00
	1842109	DISSAMBLE WALL TABLE MMD-127 (1200x700)	599,00
	1842110	DISSAMBLE WALL TABLE MMD-147 (1400x700)	641,00
	1842111	DISSAMBLE WALL TABLE MMD-167 (1600x700)	704,00
	1842112	DISSAMBLE WALL TABLE MMD-187 (1800x700)	788,00
	1842113	DISSAMBLE WALL TABLE MMD-207 (2000x700)	872,00
	1842114	DISSAMBLE WALL TABLE MMD-247 (2400x700)	977,00



Stainless steel Drawers

37	1892101	DISSAMBLE DRAWER KIT FOR 600 RANGE CM-6	158,00
	1892102	DISSAMBLE DRAWER KIT FOR 700 RANGE CM-7	163,00
	1892121	ASSEMBLED DRAWER FOR 600 RANGE CMM-6	174,00
	1892122	ASSEMBLED DRAWER FOR 700 RANGE CMM-7	179,00



Wall tables without low shelf (dissambled tables)

600 range

38	1862101	DISSAMBLE WALL TABLE WITHOUT LOW SHELF MMSD-106 (1000x600)	399,00
	1862102	DISSAMBLE WALL TABLE WITHOUT LOW SHELF MMSD-126 (1200x600)	420,00
	1862103	DISSAMBLE WALL TABLE WITHOUT LOW SHELF MMSD-146 (1400x600)	462,00
	1862104	DISSAMBLE WALL TABLE WITHOUT LOW SHELF MMSD-166 (1600x600)	504,00
	1862105	DISSAMBLE WALL TABLE WITHOUT LOW SHELF MMSD-186 (1800x600)	541,00
	1862106	DISSAMBLE WALL TABLE WITHOUT LOW SHELF MMSD-206 (2000x600)	578,00
	1862107	DISSAMBLE WALL TABLE WITHOUT LOW SHELF MMSD-246 (2400x600)	683,00



700 range

38	1862108	DISSAMBLE WALL TABLE WITHOUT LOW SHELF MMSD-107 (1000x700)	441,00
	1862109	DISSAMBLE WALL TABLE WITHOUT LOW SHELF MMSD-127 (1200x700)	473,00
	1862110	DISSAMBLE WALL TABLE WITHOUT LOW SHELF MMSD-147 (1400x700)	504,00
	1862111	DISSAMBLE WALL TABLE WITHOUT LOW SHELF MMSD-167 (1600x700)	546,00
	1862112	DISSAMBLE WALL TABLE WITHOUT LOW SHELF MMSD-187 (1800x700)	594,00
	1862113	DISSAMBLE WALL TABLE WITHOUT LOW SHELF MMSD-207 (2000x700)	646,00
	1862114	DISSAMBLE WALL TABLE WITHOUT LOW SHELF MMSD-247 (2400x700)	762,00



Stainless steel dissambled drawers

38	1892101	DISSAMBLE DRAWER KIT FOR 600 RANGE CM-6	158,00
	1892102	DISSAMBLE DRAWER KIT FOR 700 RANGE CM-7	163,00



Wall tables with sink

39	1882111	WALL TABLE WITH SINK AT RIGHT MCU-146-D (1400x600)	636,00
	1882101	WALL TABLE WITH SINK AT LEFT MCU-146-I (1400x600)	636,00
	1882113	WALL TABLE WITH SINK AT RIGHT AND TAP MCU-146-D-GM	793,00
	1882105	WALL TABLE WITH SINK AT LEFT AND TAP MCU-146-I-GM (1400x600)	846,00
	1882112	WALL TABLE WITH SINK AT RIGHT MCU-166-D (1600x600)	683,00
	1882102	WALL TABLE WITH SINK AT LEFT MCU-166-I (1600x600)	683,00
	1882114	WALL TABLE WITH SINK AT RIGHT AND TAP MCU-166-D-GM	867,00
	1882106	WALL TABLE WITH SINK AT LEFT AND TAP MCU-166-I-GM (1600x600)	867,00





Page Catalogue	Reference	Article - Model	Price € Nov 2011
----------------	-----------	-----------------	---------------------

Stainless steel Drawers

40	1892101	DISSAMBLED DRAWER KIT FOR 600 RANGE CM-6	158,00
	1892102	DISSAMBLED DRAWER KIT FOR 700 RANGE CM-7	163,00
	1892121	ASSEMBLED DRAWER FOR 600 RANGE CMM-6	174,00
	1892122	ASSEMBLED DRAWER FOR 700 RANGE CMM-7	179,00
	1892103	SET OF 4 DRAWERS CJ-4	578,00



Shelves for central and wall tables

Shelves for 600 mm tables

40	1242103	SHELF EB-106 (1000x600)	132,00
	1242104	SHELF EB-126 (1200x600)	153,00
	1242106	SHELF EB-146 (1400x600)	174,00
	1242107	SHELF EB-166 (1600x600)	195,00
	1242108	SHELF EB-186 (1800x600)	226,00
	1242109	SHELF EB-206 (2000x600)	242,00
	1242126	SHELF EB-246 (2400x600)	273,00



Shelves for 700 mm tables

40	1242117	SHELF EB-107 (1000x700)	153,00
	1242118	SHELF EB-127 (1200x700)	174,00
	1242119	SHELF EB-147 (1400x700)	200,00
	1242120	SHELF EB-167 (1600x700)	231,00
	1242121	SHELF EB-187 (1800x700)	263,00
	1242125	SHELF EB-207 (2000x700)	284,00
	1242127	SHELF EB-247 (2400x700)	300,00



Table top shelves with light and heat

41	1892112	SINGLE SHELF WITH LIGHT AND HEAT ESMC-110	688,00
	1892113	SINGLE SHELF WITH LIGHT AND HEAT ESMC-170	804,00
	1892114	DOUBLE SHELF WITH LIGHT AND HEAT - 2 SHELVES ESMC-112	1.040,00
	1892118	DOUBLE SHELF WITH LIGHT AND HEAT - 2 SHELVES ESMC-172	1.276,00



Table top shelves

41	1892104	SINGLE SHELF ESM-131	352,00
	1892105	SINGLE SHELF ESM-151	373,00
	1892106	SINGLE SHELF ESM-171	389,00
	1892107	SINGLE SHELF ESM-191	415,00
	1892108	DOUBLE SHELF 2 SHELVES ESM-132	478,00
	1892109	DOUBLE SHELF 2 SHELVES ESM-152	510,00
	1892110	DOUBLE SHELF 2 SHELVES ESM-172	562,00
	1892111	DOUBLE SHELF 2 SHELVES ESM-192	594,00



Tables in corner - angled tables

42	1832115	ANGLED TABLE MMA-66 (600x600)	478,00
	1832116	ANGLED TABLE MMA-77 (700x700)	531,00



600 mm High tables

42	1812115	600 mm HIGH TABLE MCB-86 (800x600)	389,00
	1812116	600 mm HIGH TABLE MCB-106 (1000x600)	452,00
	1812117	600 mm HIGH TABLE MCB-126 (1200x600)	504,00
	1812118	600 mm HIGH TABLE MCB-146 (1400x600)	567,00
	1812119	600 mm HIGH TABLE MCB-166 (1600x600)	615,00





Page Catalogue	Reference	Article - Model	Price € Nov 2011
----------------	-----------	-----------------	---------------------

Coffee making front counters



44	1912101	COFFEE MAKING TABLE MAC-1060 (1000x600)	850,00
	1912102	COFFEE MAKING TABLE MAC-1560 (1500x600)	1.100,00
	1912103	COFFEE MAKING TABLE MAC-2060 (2025x600)	1.300,00
	1912104	COFFEE MAKING TABLE MAC-2560 (2550x600)	1.500,00
	1912105	COFFEE MAKING TABLE WITH 2 SHELVES MAC-1060-2E (1000x600)	950,00
	1912106	COFFEE MAKING TABLE WITH 2 SHELVES MAC-1560-2E (1500x600)	1.200,00
	1912107	COFFEE MAKING TABLE WITH 2 SHELVES MAC-2060-2E (2025x600)	1.400,00
	1912108	COFFEE MAKING TABLE WITH 2 SHELVES MAC-2560-2E (2550x600)	1.600,00

Coffee front counters 350 mm depth



45	1922101	COFFEE FRONT COUNTER MA-1035 (1000x350)	504,00
	1922102	COFFEE FRONT COUNTER MA-1535 (1500x350)	651,00
	1922103	COFFEE FRONT COUNTER MA-2035 (2025x350)	840,00
	1922104	COFFEE FRONT COUNTER MA-2535 (2550x350)	1.066,00
	1922109	COFFEE FRONT COUNTER 2 SHELVES MA-1035-2E (1000x350)	525,00
	1922110	COFFEE FRONT COUNTER 2 SHELVES MA-1535-2E (1500x350)	672,00
	1922111	COFFEE FRONT COUNTER 2 SHELVES MA-2035-2E (2025x350)	872,00
	1922112	COFFEE FRONT COUNTER 2 SHELVES MA-2535-2E (2550x350)	1.155,00

Coffee front counters 600 mm depth



45	1922105	COFFEE FRONT COUNTER MA-1060 (1000x600)	672,00
	1922106	COFFEE FRONT COUNTER MA-1560 (1500x600)	903,00
	1922107	COFFEE FRONT COUNTER MA-2060 (2025x600)	1.155,00
	1922108	COFFEE FRONT COUNTER MA-2560 (2550x600)	1.449,00
	1922113	COFFEE FRONT COUNTER 2 SHELVES MA-1060-2E (1000x600)	693,00
	1922114	COFFEE FRONT COUNTER 2 SHELVES MA-1560-2E (1500x600)	924,00
	1922115	COFFEE FRONT COUNTER 2 SHELVES MA-2060-2E (2025x600)	1.176,00
	1922116	COFFEE FRONT COUNTER 2 SHELVES MA-2560-2E (2550x600)	1.470,00

Tables for terrace serving

46	1932101	TABLE FOR TERRACE SERVING MT-1470	2.205,00
----	---------	-----------------------------------	----------

Waste containers

46	3412111	WASTE CONTAINERS - Stainless steel D-65	1.155,00
	3412112	WASTE CONTAINERS - Green pannels D-65 V	1.260,00
	3412113	WASTE CONTAINERS - Red pannels D-65 R	1.260,00
	3412114	WASTE CONTAINERS - Blu pannels D-65 A	1.260,00



Page Catalogue	Reference	Article - Model	Price € Nov 2011
----------------	-----------	-----------------	---------------------

WALL CUPBOARDS



Wall cupboards

47	3412105	WALL CUPBOARD AP-104 (1000x400)	762,00
	3412106	WALL CUPBOARD AP-124 (1200x400)	767,00
	3412107	WALL CUPBOARD AP-164 (1600x400)	956,00
	3412108	WALL CUPBOARD AP-184 (1800x400)	1.103,00

Wall cupboards with dish drainer

47	3412115	WALL CUPBOARD WITH DISH DRAINER AP-104-ESC (1000x400)	762,00
----	---------	---	--------



Wall cupboards in corner

47	3412126	WALL CUPBOARD IN CORNER AP-74-ESQ (700x400)	1.008,00
----	---------	---	----------

Standing high cupboards

48	3412117	NEUTRAL CABINET ANA-126 (1200x600)	1.890,00
	3412118	NEUTRAL CABINET ANA-146 (1400x600)	2.100,00
	3412119	NEUTRAL CABINET ANA-166 (1600x600)	2.310,00

Cupboards for cleaning items

48	3412120	CUPBOARD 1 DOOR AL1P-66	1.260,00
	3412121	CUPBOARD 2 DOORS AL2P-106	1.470,00

Plate heating cupboards

49	3342101	HEATING CUPBOARD ACP-50	919,00
	3342102	HEATING CUPBOARD ACP-100	1.213,00



Sterilizing cupboards

49	4716101	STERILIZING CUPBOARD EC-15	725,00
	4716102	STERILIZING CUPBOARD EC-25	898,00

Neutral tables with doors

50	3412103	CENTRAL NEUTRAL TABLE WITH DOORS MNP-120 (1200x700)	1.365,00
	3412104	CENTRAL NEUTRAL TABLE WITH DOORS MNP-180 (1800x700)	1.743,00
	3412122	PASS-THROUGH NEUTRAL TABLE WITH DOORS MNPP-120	1.575,00
	3412123	PASS-THROUGH NEUTRAL TABLE WITH DOORS MNPP-180	2.090,00
	3412124	WALL NEUTRAL TABLE WITH DOORS MNMP-120 (1200x700)	1.512,00
	3412125	WALL NEUTRAL TABLE WITH DOORS MNMP-180 (1800x700)	1.733,00





Page Catalogue	Reference	Article - Model	Price € Nov 2011
----------------	-----------	-----------------	---------------------

Hot tables

51	3312101	HOT WALL TABLE MC-120 (1200x700)	1.701,00
	3312102	HOT WALL TABLE MC-180 (1800x700)	2.090,00
	3312103	MEHOT PASS-THROUGH TABLE MCP-120 (1200x700)	1.806,00
	3312104	MEHOT PASS-THROUGH TABLE MCP-180 (1800x700)	2.205,00



Bain-Marie tables

52	3332105	BAIN-MARIE TABLE BMSR-311 (3 GN 1/1)	1.392,00
	3332106	BAIN-MARIE TABLE BMSR-411 (4 GN 1/1)	1.533,00

Bain-Marie tables with cupboard

53	3332103	BAIN-MARIE TABLE WITH HOT CUPBOARD MBMR-311 (3 GN 1/1)	2.678,00
	3332104	BAIN-MARIE TABLE WITH HOT CUPBOARD MBMR-411 (4 GN 1/1)	3.150,00
	3332101	BAIN-MARIE TABLE WITH NEUTRAL CUPBOARD MBM-311 (3 GN 1/1)	2.111,00
	3332102	BAIN-MARIE TABLE WITH NEUTRAL CUPBOARD MBM-411 (4 GN 1/1)	2.415,00

Table top Bain-Marie

54	3112101	TABLE TOP BAIN-MARIE 1 GN 1/1 BMSM-111	709,00
	3112102	TABLE TOP BAIN-MARIE 2 GN 1/1 BMSM-211	1.103,00
	3112103	TABLE TOP BAIN-MARIE 3 GN 1/1 BMSM-311	1.418,00



Compact table top Bain-Marie

54	3112107	BAIN-MARIE BMSM-111-E (1 GN 1/1)	494,00
----	---------	----------------------------------	--------

Table top Bain-Marie - Hot air

55	3112104	TABLE TOP BAIN-MARIE BMSM-111-S (1 GN 1/1)	630,00
	3112105	TABLE TOP BAIN-MARIE BMSM-211-S (2 GN 1/1)	735,00
	3112106	TABLE TOP BAIN-MARIE BMSM-311-S (3 GN 1/1)	840,00



Page Catalogue	Reference	Article - Model	Price € Nov 2011
----------------	-----------	-----------------	---------------------

SHELVES - Polyethylene and aluminium

Racks

60	2253201	RACK PAR-43 (400X300)	6,00
	2253203	RACK PAR-44 (400X400)	7,00
	2253202	RACK PAR-53 (500X300)	7,50
	2253204	RACK PAR-54 (500X400)	8,00



Hooks for angles

60	2253210	HOOK GA	4,20
----	---------	---------	------

Passing pins

60	2253211	PASSIN PING PE	3,00
----	---------	----------------	------



Benches

60	2253172	BENCH BA-1050 (1050X500X250)	132,00
	2253170	BENCH BA-1250 (1250X500X250)	147,00
	2253171	BENCH BA-1650 (1650X500X250)	163,00

Racks 400 mm large

61	2253101	RACK S-64 (600X400)	31,00
	2253102	RACK S-74 (700X400)	35,00
	2253103	RACK S-84 (800X400)	37,00
	2253104	RACK S-94 (900X400)	40,00
	2253105	RACK S-104 (1000X400)	44,00
	2253106	RACK S-114 (1100X400)	48,00
	2253107	RACK S-124 (1200X400)	51,00
	2253108	RACK S-134 (1300X400)	55,00
	2253109	RACK S-144 (1400X400)	58,00
	2253110	RACK S-154 (1500X400)	62,00
	2253111	RACK S-164 (1600X400)	67,00



Racks 500 mm large

61	2253121	RACK S-65 (600X500)	34,00
	2253122	RACK S-75 (700X500)	37,00
	2253123	RACK S-85 (800X500)	40,00
	2253124	RACK S-95 (900X500)	45,00
	2253125	RACK S-105 (1000X500)	48,00
	2253126	RACK S-115 (1100X500)	52,00
	2253127	RACK S-125 (1200X500)	55,00
	2253128	RACK S-135 (1300X500)	60,00
	2253129	RACK S-145 (1400X500)	63,00
	2253130	RACK S-155 (1500X500)	69,00
	2253131	RACK S-165 (1600X500)	72,00



Supports 400 mm large

61	2253141	SUPPORT P-43 (1750X400X3)	67,00
	2253142	SUPPORT P-44 (1750X400X4)	72,00
	2253143	SUPPORT P-45 (1750X400X5)	76,00
	2253147	SUPPORT PB-43 (1300X400X3)	59,00
	2253149	SUPPORT PA-45 (2000X400X5)	83,00
	2253150	SUPPORT PA-46 (2000X400X6)	88,00

Supports 500 mm large

61	2253144	SUPPORT P-53 (1750X500X3)	70,00
	2253145	SUPPORT P-54 (1750X500X4)	73,00
	2253146	SUPPORT P-55 (1750X500X5)	76,00
	2253148	SUPPORT PB-53 (1300X500X3)	62,00
	2253151	SUPPORT PA-55 (2000X500X5)	86,00
	2253152	SUPPORT PA-56 (2000X500X6)	89,00





Page Catalogue	Reference	Article - Model	Price € Nov 2011
----------------	-----------	-----------------	---------------------



Mobile supports

61	2253160	MOBILE SUPPORT SM-44 (1750X400)	179,00
	2253161	MOBILE SUPPORT SM-45 (1750X400)	184,00
	2253162	MOBILE SUPPORT SM-54 (1750X500)	189,00
	2253163	MOBILE SUPPORT SM-55 (1750X500)	189,00

Multi-purpose trolley (kit)

62	2253260	TROLLEY KIT KCM-55	762,00
----	---------	--------------------	--------

Hanging bars

62	2253220	HANGING BAR BCOL-8 (800 mm)	45,00
	2253221	HANGING BAR BCOL-9 (900 mm)	47,00
	2253222	HANGING BAR BCOL-10 (1000 mm)	49,00
	2253223	HANGING BAR BCOL-11 (1100 mm)	51,00
	2253224	HANGING BAR BCOL-12 (1200 mm)	53,00
	2253225	HANGING BAR BCOL-13 (1300 mm)	55,00
	2253226	HANGING BAR BCOL-14 (1400 mm)	57,00
	2253227	HANGING BAR BCOL-15 (1500 mm)	59,00
	2253228	HANGING BAR BCOL-16 (1600 mm)	62,00

SHELVES - Stainless steel



Feet removable shelves

Shelves

68	2232101	SHELF Stainless steel EP-1040 (1000x400)	111,00
	2232102	SHELF Stainless steel EP-1240 (1200x400)	121,00
	2232103	SHELF Stainless steel EP-1440 (1400x400)	137,00
	2232104	SHELF Stainless steel EP-1050 (1000x500)	121,00
	2232105	SHELF Stainless steel EP-1250 (1200x500)	142,00
	2232106	SHELF Stainless steel EP-1450 (1400x500)	158,00

Supports

68	2232107	SUPPORT Stainless steel SE-1700	46,00
	2232108	SUPPORT Stainless steel SE-2000	52,00

Wall support

68	2212121	WALL SUPPORT EMM-64 (600x400)	179,00
----	---------	-------------------------------	--------

Wall bars

68	2232109	WALL BAR BC-10 (1000x200)	91,00
	2232110	WALL BAR BC-15 (1500x200)	104,00
	2232111	WALL BAR BC-20 (2000x200)	119,00



Page Catalogue	Reference	Article - Model	Price € Nov 2011
----------------	-----------	-----------------	---------------------

Wall adjustable shelves

Supports



69	2212107	WALL SUPPORT MM-60 (600 mm)	28,00
	2212108	WALL SUPPORT MM-100 (1000 mm)	38,00
	2212109	WALL SUPPORT MM-150 (1500 mm)	42,00

Shelves

69	2212101	WALL SHELF EMR-1025 (1000x250)	100,00
	2212102	WALL SHELF EMR-1425 (1400x250)	132,00
	2212103	WALL SHELF EMR-1040 (1000x400)	142,00
	2212104	WALL SHELF EMR-1440 (1000x400)	179,00
	2212105	TILTED WALL SHELF EMRI-1025 (1000x250)	90,00
	2212106	TILTED WALL SHELF EMRI-1040 (1000x400)	126,00

Wall fixed shelves

Flat shelves



69	2212119	WALL SHELF EML-1025 (1000x250)	95,00
	2212110	WALL SHELF EML-1225 (1200x250)	105,00
	2212111	WALL SHELF EML-1425 (1400x250)	121,00
	2212112	WALL SHELF EML-1625 (1600x250)	132,00
	2212120	WALL SHELF EML-1040 (1000x400)	121,00
	2212113	WALL SHELF EML-1240 (1200x400)	153,00
	2212114	WALL SHELF EML-1440 (1400x400)	184,00
	2212115	WALL SHELF EML-1640 (1600x400)	189,00

Tubular shelves

69	2212116	WALL SHELF EMT-1240 (1200x400)	168,00
	2212117	WALL SHELF EMT-1640 (1600x400)	200,00
	2212118	WALL SHELF EMT-1840 (1800x400)	242,00



Page Catalogue	Reference	Article - Model	Price € Nov 2011
----------------	-----------	-----------------	---------------------

TROLLEYS

Service trolleys

2 shelves



72	2412101	SERVICE TROLLEY - 2 SHELVES CE-852	478,00
	2412102	SERVICE TROLLEY - 2 SHELVES CE-952	510,00
	2412103	SERVICE TROLLEY - 2 SHELVES - REINFORCED CER-1062	615,00

3 shelves

72	2412104	SERVICE TROLLEY - 3 SHELVES CE-853	594,00
	2412105	SERVICE TROLLEY - 3 SHELVES CE-953	646,00
	2412106	SERVICE TROLLEY - 3 SHELVES - REINFORCED CER-1063	746,00

4 shelves

72	2412107	SERVICE TROLLEY - 4 SHELVES CE-954	804,00
	2412108	SERVICE TROLLEY - 4 SHELVES REFORZADO CER-1064	972,00

Accessories for service trolleys



73	2492110	BRACKET FOR CUTLERY BUCKETS ACE-4C	90,00
	2492111	BRACKET FOR GN 1/3 ACE-1/3GN	53,00
	2492112	BRACKET FOR WASTE BAGS ACE-BB	153,00

Service and pick-up trolley

73	2412121	SERVICE TROLLEY CSR-1060	646,00
----	---------	--------------------------	--------

Pick-up trolley

74	2472110	PICK-UP TROLLEY CRR-1570	2.310,00
----	---------	--------------------------	----------

Trolley for vacuum packers

75	2412119	TROLLEY FOR VACUUM PACKER CEV	504,00
----	---------	-------------------------------	--------

Reinforced trolley for large loads

75	2472103	REINFORCED TROLLEY CR-1060	525,00
----	---------	----------------------------	--------

Trolley with clothes transport and distribution bags

75	2472104	TROLLEY CDR-1060	541,00
----	---------	------------------	--------

Trolley for containers

76	2412109	TROLLEY FOR CONTAINERS CTC-211	447,00
	2412110	TROLLEY FOR CONTAINERS CTC-311	515,00

Drainer trolley

76	2412111	DRAINER TROLLEY CES	693,00
----	---------	---------------------	--------

Trolley for washing

76	2476109	TROLLEY FOR WASHING CPL-65	536,00
----	---------	----------------------------	--------

Trolleys for transportation and storage of dishes

77	2452103	TROLLEY FOR DISHES CP-150	510,00
	2452104	TROLLEY FOR DISHES CP-300	725,00
	2492101	SEPARATOR SP-1	53,00
	2492103	CASE FOR TROLLEY CP-150 FCP-150	105,00
	2492104	CASE FOR TROLLEY CP-300 FCP-300	116,00

Multi-purpose bins

77	2476105	BIN CUV-50	315,00
	2476106	BIN CUV-105	399,00
	2476108	BIN WITH PEDAL CUVP-105	499,00



Trolleys with guides for standard containers

Low trolleys

78	2432101	TROLLEY WITH GUIDES CGB-11	462,00
	2432102	TROLLEY WITH GUIDES CGB-21	515,00

High trolleys

78	2432103	TROLLEY WITH GUIDES CGA-11	609,00
	2432104	TROLLEY WITH GUIDES CGA-21	735,00
	2432105	TROLLEY WITH GUIDES CGA-64	567,00
	2492113	TROLLEY COVER CGA-11 MODEL FCGA-11	142,00
	2492107	TROLLEY COVER CGA-21 MODEL FCGA-21	147,00
	2492114	TROLLEY COVER CGA-64 MODEL FCGA-64	158,00

Fit-in trolley

78	2432106	FIT-IN TROLLEY CGE-21	762,00
----	---------	-----------------------	--------

Trolleys with self-serv. Trays, + built-in panels

79	2432111	TROLLEY WITH GREEN PANELS CBCV-20	1.523,00
	2432112	TROLLEY WITH BLUE PANELS CBCA-20	1.523,00
	2432113	TROLLEY WITH RED PANELS CBCR-20	1.523,00

Self-service tray trolleys

79	2432107	TROLLEY WITH GUIDES CBC-12	683,00
	2432108	TROLLEY WITH GUIDES CBC-24	1.182,00
	2492108	SIDE PANELS FOR CBC-12 AND CBC-24 MODESL - PCBC	142,00
	2492109	TROLLEY COVER CBC-12 MODEL - FCBC-12	179,00

Trolley with guides for Euronorm isothermal trays

79	2432109	CARRO PARA BANDEJAS ISOTÉRMICAS EURONORM CBIE-20	851,00
----	---------	--	--------

Trolley with guides for dishes baskets

80	2432110	TROLLEY WITH GUIDES FOR DISHES BASKETS CCV-7	609,00
	2492106	TROLLEY COVER CCV-7 MODEL - FCCV-7	121,00

Trolley for dish baskets

80	2472102	TROLLEY BC-55	237,00
	2472101	TROLLEY CC-55	258,00
	2492105	TROLLEY COVER CC-55 AND BC-55 MODELS - FCC-55	100,00

Constant level trolleys for dishwasher trays and baskets

81	2482101	LEVEL TROLLEY CNB	882,00
	2482102	LEVEL TROLLEY CNB-C	951,00
	2482103	LEVEL TROLLEY CNC-55	919,00

Trolley to transport dishes and wall plate holder

82	2452101	DISHES TROLLEY CPP-100	693,00
	2492102	COVER FOR CPP-100 MODEL - FPH	321,00
	2452102	WALL PLATE HOLDER SPP-14	294,00





THERMO TROLLEYS



Thermo-isolated trolley for isothermal trays

83	2472107	THERMO TROLLEY CABIE-12	1.470,00
----	---------	-------------------------	----------

Hot trolleys

85	2622104	HOT TROLLEY CCB-10	2.730,00
	2622105	HOT TROLLEY CCB-20	3.360,00
	2622106	HOT TROLLEY CCB-40	5.224,00
	2632101	OPTIONAL GRID FOR CCB-40 MODEL - PCCB	16,00

Hot and refrigerated trolley

86	2622107	MIXED TROLLEY CCF-2020	6.090,00
----	---------	------------------------	----------

Refrigerated trolleys

87	2712101	REFRIGERATED TROLLEY CF-20	3.429,00
	2712102	REFRIGERATED TROLLEY CF-40	5.067,00

Bain-Marie Trolley

88	3132101	BAIN-MARIE TROLLEY CBM-211 (2 GN-1/1)	1.365,00
	3132102	BAIN-MARIE TROLLEY CBM-311 (3 GN-1/1)	1.680,00
	3132103	BAIN-MARIE TROLLEY CBM-411 (4 GN-1/1)	1.995,00
	3132104	BAIN-MARIE TROLLEY WITH 2 SEPARATED TANKS CBM2-211	1.680,00
	3132105	BAIN-MARIE TROLLEY WITH 3 SEPARATED TANKS CBM3-311	2.074,00

Bain-Marie Trolley with hot reserve

89	3132106	BAIN-MARIE TROLLEY WITH HOT RESERVE CBMR-211 (2GN 1/1)	3.255,00
----	---------	--	----------

Trolleys with refrigerated tank

89	3132107	TROLLEY WITH REFRIGERATED TANK CBMF-211 (2 GN 1/1)	2.258,00
	3132108	TROLLEY WITH REFRIGERATED TANK CBMF-311 (3 GN 1/1)	2.583,00

Hot trolleys to distribute at constant level

90	2612101	HOT TROLLEY FOR DISHES AT CONSTANT LEVEL CPC2-28	1.880,00
	2612102	HOT TROLLEY FOR DISHES AT CONSTANT LEVEL CPC2-34	2.069,00
	2612103	HOT TROLLEY FOR DISHES AT CONSTANT LEVEL CPC4-28	2.925,00
	3793104	HOT TROLLEY - COVER FOR DISHES Ø28 - TDP-28	58,00
	3793105	HOT TROLLEY - COVER FOR DISHES Ø34 - TDP-34	58,00





Page Catalogue	Reference	Article - Model	Price € Nov 2011
----------------	-----------	-----------------	---------------------

STAINLESS STEEL GASTRONORM CONTAINERS

Flat containers without handles

93	2016101	St. steel CONTAINER - GN 2/1-20	48,00
	2016102	St. steel CONTAINER - GN 2/1-40	53,00
	2016103	St. steel CONTAINER - GN 2/1-65	58,00
	2016104	St. steel CONTAINER - GN 2/1-100	79,00
	2016105	St. steel CONTAINER - GN 2/1-150	132,00
	2016106	St. steel CONTAINER - GN 2/1-200	163,00
	2016108	St. steel CONTAINER - GN 1/1-20	21,00
	2016109	St. steel CONTAINER - GN 1/1-40	27,00
	2016110	St. steel CONTAINER - GN 1/1-65	34,00
	2016111	St. steel CONTAINER - GN 1/1-100	42,00
	2016112	St. steel CONTAINER - GN 1/1-150	58,00
	2016113	St. steel CONTAINER - GN 1/1-200	68,00
	2016115	St. steel CONTAINER - GN 2/3-20	19,00
	2016116	St. steel CONTAINER - GN 2/3-40	28,00
	2016117	St. steel CONTAINER - GN 2/3-65	25,00
	2016118	St. steel CONTAINER - GN 2/3-100	32,00
	2016119	St. steel CONTAINER - GN 2/3-150	48,00
	2016120	St. steel CONTAINER - GN 2/3-200	55,00
	2016122	St. steel CONTAINER - GN 1/2-20	16,00
	2016123	St. steel CONTAINER - GN 1/2-40	17,00
	2016124	St. steel CONTAINER - GN 1/2-65	20,00
	2016125	St. steel CONTAINER - GN 1/2-100	25,00
	2016126	St. steel CONTAINER - GN 1/2-150	36,00
	2016127	St. steel CONTAINER - GN 1/2-200	42,00
	2016130	St. steel CONTAINER - GN 1/3-20	15,00
	2016131	St. steel CONTAINER - GN 1/3-40	16,00
	2016132	St. steel CONTAINER - GN 1/3-65	17,00
	2016133	St. steel CONTAINER - GN 1/3-100	20,00
	2016134	St. steel CONTAINER - GN 1/3-150	27,00
	2016135	St. steel CONTAINER - GN 1/3-200	36,00
	2016138	St. steel CONTAINER - GN 1/4-20	15,00
	2016139	St. steel CONTAINER - GN 1/4-65	16,00
	2016140	St. steel CONTAINER - GN 1/4-100	18,00
	2016141	St. steel CONTAINER - GN 1/4-150	27,00
	2016142	St. steel CONTAINER - GN 1/4-200	33,00
	2016145	St. steel CONTAINER - GN 1/6-65	13,00
	2016146	St. steel CONTAINER - GN 1/6-100	15,00
	2016147	St. steel CONTAINER - GN 1/6-150	23,00
	2016148	St. steel CONTAINER - GN 1/6-200	35,00
	2016150	St. steel CONTAINER - GN 1/9-65	13,00
	2016151	St. steel CONTAINER - GN 1/9-100	17,00



Flat containers with handles

93	2016300	St. steel CONTAINER - WITH HANDLES GNA 2/1-40	63,00
	2016301	St. steel CONTAINER - WITH HANDLES GNA 2/1-65	69,00
	2016302	St. steel CONTAINER - WITH HANDLES GNA 2/1-100	90,00
	2016303	St. steel CONTAINER - WITH HANDLES GNA 2/1-150	142,00
	2016304	St. steel CONTAINER - WITH HANDLES GNA 2/1-200	158,00
	2016307	St. steel CONTAINER - WITH HANDLES GNA 1/1-40	37,00
	2016308	St. steel CONTAINER - WITH HANDLES GNA 1/1-65	42,00
	2016309	St. steel CONTAINER - WITH HANDLES GNA 1/1-100	48,00
	2016310	St. steel CONTAINER - WITH HANDLES GNA 1/1-150	71,00
	2016311	St. steel CONTAINER - WITH HANDLES GNA 1/1-200	80,00
	2016315	St. steel CONTAINER - WITH HANDLES GNA 2/3-40	29,00
	2016316	St. steel CONTAINER - WITH HANDLES GNA 2/3-65	33,00
	2016317	St. steel CONTAINER - WITH HANDLES GNA 2/3-100	41,00
	2016318	St. steel CONTAINER - WITH HANDLES GNA 2/3-150	55,00
	2016319	St. steel CONTAINER - WITH HANDLES GNA 2/3-200	63,00
	2016322	St. steel CONTAINER - WITH HANDLES GNA 1/2-40	26,00





Page Catalogue	Reference	Article - Model	Price € Nov 2011
	2016323	St. steel CONTAINER - WITH HANDLES GNA 1/2-65	29,00
	2016324	St. steel CONTAINER - WITH HANDLES GNA 1/2-100	34,00
	2016325	St. steel CONTAINER - WITH HANDLES GNA 1/2-150	46,00
	2016326	St. steel CONTAINER - WITH HANDLES GNA 1/2-200	52,00
	2016330	St. steel CONTAINER - WITH HANDLES GNA 1/3-40	25,00
	2016331	St. steel CONTAINER - WITH HANDLES GNA 1/3-65	27,00
	2016332	St. steel CONTAINER - WITH HANDLES GNA 1/3-100	30,00
	2016333	St. steel CONTAINER - WITH HANDLES GNA 1/3-150	35,00
	2016334	St. steel CONTAINER - WITH HANDLES GNA 1/3-200	45,00
	2016340	St. steel CONTAINER - WITH HANDLES GNA 1/4-65	26,00
	2016341	St. steel CONTAINER - WITH HANDLES GNA 1/4-100	28,00
	2016342	St. steel CONTAINER - WITH HANDLES GNA 1/4-150	33,00
	2016343	St. steel CONTAINER - WITH HANDLES GNA 1/4-200	42,00
	2016350	St. steel CONTAINER - WITH HANDLES GNA 1/6-65	23,00
	2016351	St. steel CONTAINER - WITH HANDLES GNA 1/6-100	24,00
	2016352	St. steel CONTAINER - WITH HANDLES GNA 1/6-150	31,00
	2016353	St. steel CONTAINER - WITH HANDLES GNA 1/6-200	46,00

Perforated containers without handles

94	2016155	St. steel CONTAINER - PERFORATED GNO 2/1-40	69,00
	2016156	St. steel CONTAINER - PERFORATED GNO 2/1-65	76,00
	2016157	St. steel CONTAINER - PERFORATED GNO 2/1-100	147,00
	2016158	St. steel CONTAINER - PERFORATED GNO 2/1-150	189,00
	2016159	St. steel CONTAINER - PERFORATED GNO 2/1-200	310,00
	2016161	St. steel CONTAINER - PERFORATED GNO 1/1-40	36,00
	2016162	St. steel CONTAINER - PERFORATED GNO 1/1-65	40,00
	2016163	St. steel CONTAINER - PERFORATED GNO 1/1-100	49,00
	2016164	St. steel CONTAINER - PERFORATED GNO 1/1-150	80,00
	2016165	St. steel CONTAINER - PERFORATED GNO 1/1-200	107,00
	2016175	St. steel CONTAINER - PERFORATED GNO 2/3-40	29,00
	2016176	St. steel CONTAINER - PERFORATED GNO 2/3-65	33,00
	2016177	St. steel CONTAINER - PERFORATED GNO 2/3-100	52,00
	2016178	St. steel CONTAINER - PERFORATED GNO 2/3-150	71,00
	2016179	St. steel CONTAINER - PERFORATED GNO 2/3-200	84,00
	2016185	St. steel CONTAINER - PERFORATED GNO 1/2-40	26,00
	2016186	St. steel CONTAINER - PERFORATED GNO 1/2-65	27,00
	2016187	St. steel CONTAINER - PERFORATED GNO 1/2-100	41,00
	2016188	St. steel CONTAINER - PERFORATED GNO 1/2-150	58,00
	2016189	St. steel CONTAINER - PERFORATED GNO 1/2-200	78,00



Perforated containers with retractable handles

94	2016360	PERFORATED CONTAINER WITH RETRACTABLE HANDLES GNOA 2/1-	91,00
	2016361	PERFORATED CONTAINER WITH RETRACTABLE HANDLES GNOA 2/1-	97,00
	2016362	PERFORATED CONTAINER WITH RETRACTABLE HANDLES GNOA 2/1-	158,00
	2016363	PERFORATED CONTAINER WITH RETRACTABLE HANDLES GNOA 2/1-	237,00
	2016364	PERFORATED CONTAINER WITH RETRACTABLE HANDLES GNOA 2/1-	305,00
	2016370	PERFORATED CONTAINER WITH RETRACTABLE HANDLES GNOA 1/1-	50,00
	2016371	PERFORATED CONTAINER WITH RETRACTABLE HANDLES GNOA 1/1-	56,00
	2016372	PERFORATED CONTAINER WITH RETRACTABLE HANDLES GNOA 1/1-	79,00
	2016373	PERFORATED CONTAINER WITH RETRACTABLE HANDLES GNOA 1/1-	118,00
	2016374	PERFORATED CONTAINER WITH RETRACTABLE HANDLES GNOA 1/1-	145,00
	2016380	PERFORATED CONTAINER WITH RETRACTABLE HANDLES GNOA 2/3-	36,00
	2016381	PERFORATED CONTAINER WITH RETRACTABLE HANDLES GNOA 2/3-	41,00
	2016382	PERFORATED CONTAINER WITH RETRACTABLE HANDLES GNOA 2/3-	63,00
	2016383	PERFORATED CONTAINER WITH RETRACTABLE HANDLES GNOA 2/3-	84,00
	2016384	PERFORATED CONTAINER WITH RETRACTABLE HANDLES GNOA 2/3-	102,00
	2016390	PERFORATED CONTAINER WITH RETRACTABLE HANDLES GNOA 1/2-	34,00
	2016391	PERFORATED CONTAINER WITH RETRACTABLE HANDLES GNOA 1/2-	37,00
	2016392	PERFORATED CONTAINER WITH RETRACTABLE HANDLES GNOA 1/2-	53,00
	2016393	PERFORATED CONTAINER WITH RETRACTABLE HANDLES GNOA 1/2-	72,00
	2016394	PERFORATED CONTAINER WITH RETRACTABLE HANDLES GNOA 1/2-	86,00





Page Catalogue	Reference	Article - Model	Price € Nov 2011
----------------	-----------	-----------------	---------------------

Gastronorm display support

94	2085200	GASTRONORM DISPLAY SUPPORT EXP-GN	977,00
----	---------	-----------------------------------	--------

Standard lids

95	2016400	St. steel LID - GNT 1/1	27,00
	2016401	St. steel LID - GNT 2/3	20,00
	2016402	St. steel LID - GNT 1/2	17,00
	2016403	St. steel LID - GNT 1/3	13,00
	2016404	St. steel LID - GNT 1/4	10,00
	2016405	St. steel LID - GNT 1/6	7,00
	2016406	St. steel LID - GNT 1/9	6,00



Lids with holes for handles

95	2016410	St. steel LID - WITH HOLES FOR HANDLES GNNTA 1/1	28,00
	2016411	St. steel LID - WITH HOLES FOR HANDLES GNNTA 2/3	23,00
	2016412	St. steel LID - WITH HOLES FOR HANDLES GNNTA 1/2	19,00
	2016413	St. steel LID - WITH HOLES FOR HANDLES GNNTA 1/3	16,00
	2016414	St. steel LID - WITH HOLES FOR HANDLES GNNTA 1/4	14,00
	2016415	St. steel LID - WITH HOLES FOR HANDLES GNNTA 1/6	12,00



Lids with hole for ladle

95	2016420	St. steel LID - WITH HOLE FOR LADLE GNTO 1/1	29,00
	2016421	St. steel LID - WITH HOLE FOR LADLE GNTO 2/3	25,00
	2016422	St. steel LID - WITH HOLE FOR LADLE GNTO 1/2	18,00
	2016423	St. steel LID - WITH HOLE FOR LADLE GNTO 1/3	14,00
	2016424	St. steel LID - WITH HOLE FOR LADLE GNTO 1/4	12,00
	2016425	St. steel LID - WITH HOLE FOR LADLE GNTO 1/6	11,00



Lids with waterproof joints

95	2016430	St. steel LID - WATERPROOF JOINT - GNTH 1/1	76,00
	2016431	St. steel LID - WATERPROOF JOINT - GNTH 2/3	65,00
	2016432	St. steel LID - WATERPROOF JOINT - GNTH 1/2	58,00
	2016433	St. steel LID - WATERPROOF JOINT - GNTH 1/3	46,00
	2016434	St. steel LID - WATERPROOF JOINT - GNTH 1/4	40,00



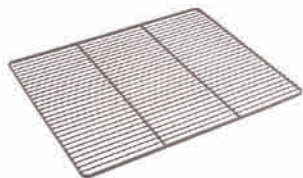
Stainless steel grids

95	2025200	St. steel GRIDS EVI 2/1	50,00
	2025201	St. steel GRIDS EVI 1/1	25,00
	2025202	St. steel GRIDS EVI 64	36,00



Chromed grids

95	2025205	CHROMED GRIDS EVC 2/1	18,00
	2025206	CHROMED GRIDS EVC 1/1	13,00
	2025207	CHROMED GRIDS EVC 64	17,00



Plastic covered grids (grey)

95	2025210	PLASTIC COVERED GRIDS EVP 2/1	14,00
	2025211	PLASTIC COVERED GRIDS EVP 1/1	9,00

Containers with anti-adherent covering

96	2016500	CONTAINER GNQ 1/1-20	74,00
	2016501	CONTAINER GNQ 1/1-40	79,00
	2016502	CONTAINER GNQ 1/1-65	100,00



Normal trays (with flat edge)

96	2016200	St. steel TRAY GNB 2/1-20	53,00
	2016201	St. steel TRAY GNB 2/1-40	58,00
	2016202	St. steel TRAY GNB 2/1-65	63,00
	2016205	St. steel TRAY GNB 1/1-20	27,00
	2016206	St. steel TRAY GNB 1/1-40	32,00
	2016207	St. steel TRAY GNB 1/1-65	48,00





Page Catalogue	Reference	Article - Model	Price € Nov 2011
----------------	-----------	-----------------	---------------------

Reinforced trays (with flat edge)

96	2016215	St. steel REINFORCED TRAY GNBR 1/1-20	32,00
	2016216	St. steel REINFORCED TRAY GNBR 1/1-40	48,00
	2016217	St. steel REINFORCED TRAY GNBR 1/1-65	53,00

Gastronorm serving dishes

96	2066128	SERVING DISH GNBS-1/1	31,00
	2066129	SERVING DISH GNBS-1/2	24,00

Perforated bottoms

96	2022101	PERFORATED BOTTOM GNF 1/1	48,00
	2022102	PERFORATED BOTTOM GNF 1/2	32,00
	2022103	PERFORATED BOTTOM GNF 1/3	27,00

Dividing profiles

96	2022105	DIVIDING PROFILE GND 2/1	11,00
	2022106	DIVIDING PROFILE GND 1/1	8,00

Stainless steel containers for vacuum packing

96	2076101	CONTAINER GASTRO-VAC GNVR-11100	95,00
	2076102	CONTAINER GASTRO-VAC GNVR-11150	126,00
	2076103	CONTAINER GASTRO-VAC GNVR-11200	142,00
	2076104	CONTAINER GASTRO-VAC GNVR-12100	53,00
	2076105	CONTAINER GASTRO-VAC GNVR-12150	63,00
	2076106	CONTAINER-GASTROVAC GNVR-13100	37,00
	2076107	CONTAINER GASTRO-VAC GNVR-13150	48,00

Lids (The valve and seal are included in each lid)

97	2076110	LID GASTRO-VAC GNVT-11	111,00
	2076111	LID GASTRO-VAC GNVT-12	90,00
	2076112	LID GASTRO-VAC GNVT-13	79,00

STANDARD CONTAINERS

Ice cream containers

100	2056101	ICE CREAM CONTAINER GH-4	24,00
	2056102	ICE CREAM CONTAINER GH-5	25,00
	2056103	ICE CREAM CONTAINER GH-7	27,00
	2056104	ICE CREAM CONTAINER GH-9	30,00
	2056105	ICE CREAM CONTAINER GHC-4	34,00
	2056106	LID FOR ICE CREAM CONTAINER GHT	10,00

Dispenser washer

100	2056107	CONTAINER DISPENSER WASHER CLP-12	53,00
-----	---------	-----------------------------------	-------

Cutlery container

100	2016418	CUTLERY CONTAINER GNC-14	42,00
-----	---------	--------------------------	-------

Cutlery pick-up container made of polypropylane

100	2066137	CUTLERY PICK-UP CONTAINER RC-1/1	16,00
-----	---------	----------------------------------	-------

Supermarket trays in food ABS

100	2066130	SUPERMARKET TRAY BSUP-64	23,00
	2066131	SUPERMARKET TRAY BSUP-1/1	19,00

Cafeteria self-service trays

100	2066132	CAFETERIA / SELF-SERVICE TRAY - BLUE BCAF-A	15,00
	2066133	CAFETERIA / SELF-SERVICE TRAY. - GREY BCAF-G	15,00
	2066134	CAFETERIA / SELF-SERVICE TRAY - BROWN BCAF-M	15,00
	2066135	CAFETERIA / SELF-SERVICE TRAY - RED BCAF-R	15,00
	2066136	CAFETERIA / SELF-SERVICE TRAY - PINK BCAF-S	15,00





Page Catalogue	Reference	Article - Model	Price € Nov 2011
----------------	-----------	-----------------	---------------------

TRAYS AND CONTAINERS FOR BAKERY**Colored steel tray-sheets with 90 ° tilted edges**

101	2065101	STEEL TRAY-SHEET CHA-64	15,00
	2065102	STEEL TRAY-SHEET CHA-1/1	15,00
	2065103	STEEL TRAY-SHEET CHA-2/1	20,00

**Aluminium trays with 45 ° tilted edges**

101	2065104	ALUMINIUM TRAY BA-64	18,00
	2065105	ALUMINIUM TRAY BA-1/1	18,00
	2065106	ALUMINIUM TRAY BA-2/1	30,00

Perforated aluminum trays with 45 ° tilted edges

101	2065107	PERFORATED ALUMINIUM TRAY BAP-64	27,00
	2065108	PERFORATED ALUMINIUM TRAY BAP-1/1	27,00
	2065109	PERFORATED ALUMINIUM TRAY BAP-2/1	42,00

Anti-adherent covering trays

102	2065110	ALUMINIUM TRAY - ANTIADHERENT BAS-64	39,00
	2065111	ALUMINIUM TRAY - ANTIADHERENT BAS-1/1	39,00
	2065112	ALUMINIUM TRAY - ANTIADHERENT BAS-2/1	51,00

**Perforated trays with anti-sliding covering**

102	2065113	PERFORATED ANTIADHERENT ALUMINIUM TRAY BAPS-64	46,00
	2065114	PERFORATED ANTIADHERENT ALUMINIUM TRAY BAPS-1/1	46,00
	2065115	PERFORATED ANTIADHERENT ALUMINIUM TRAY BAPS-2/1	65,00

Anodized aluminum trays

102	2065116	ALUMINIUM TRAY - ANODIZED BAA-64	33,00
	2065117	ALUMINIUM TRAY - ANODIZED BAA-1/1	21,00
	2065118	ALUMINIUM TRAY - ANODIZED BAA-2/1	35,00

**600 x 400 mm embedded trays**

102	2065138	EMBEDDED ALUMINIUM TRAY BAE (600x400)	23,00
	2065139	EMBEDDED PERFORATED ALUMINIUM TRAY BAE-P (600x400)	30,00
	2065140	EMBEDDED COLORED TRAY BAE-PAV (600x400)	14,00
	2065141	EMBEDDED ALUMINIUM TRAY - TEFLON BAET (600x400)	49,00
	2065142	EMBEDDED ALUMINIUM TRAY - ANODIZED - GOLD BAEA (600x400)	37,00

**Cooking base made of perforated aluminum**

103	2065143	COOKING BASE SC-64	45,00
	2065144	COOKING BASE SC-1/1	45,00
	2065145	COOKING BASE SC-2/1	53,00

**Anti-adherent cooking base**

103	2065119	ANTIADHERENT COOKING BASE SCS-64	63,00
	2065120	ANTIADHERENT COOKING BASE SCS-1/1	63,00
	2065121	ANTIADHERENT COOKING BASE SCS-2/1	74,00

Anti-adherent cooking cloth

103	2066125	ANTIADHERENT COOKING CLOTH TC-64	38,00
	2066126	ANTIADHERENT COOKING CLOTH TC-1/1	29,00
	2066127	ANTIADHERENT COOKING CLOTH TC-2/1	40,00

Isothermal containers

105	4516101	ISOTHERMAL CONTAINER C-20	394,00
	4516102	ISOTHERMAL CONTAINER C-30	468,00
	4516106	ISOTHERMAL CONTAINER C-40	772,00
	4516103	ISOTHERMAL CONTAINER C-60	546,00





Page Catalogue	Reference	Article - Model	Price € Nov 2011
----------------	-----------	-----------------	---------------------

SELF-SERVICE



Element with top refrigerated well

110	3552101	SELF-SERVICE ELEMENT SCRR-12 (1200x700)	3.180,00
	3552102	SELF-SERVICE ELEMENT SCRR-16 (1600x700)	3.392,00

Element with top refrigerated plate

110	3552103	SELF-SERVICE ELEMENT SPFR-12 (1200x700)	3.085,00
	3552104	SELF-SERVICE ELEMENT SPFR-16 (1600x700)	3.329,00



Refrigerated display elements

111	3552107	SELF-SERVICE DISPLAY SVF-16 (1600x700)	3.965,00
	3552108	SELF-SERVICE DISPLAY WITH BOTTOM SVF-16-F (1600x700)	4.240,00

Central island unit with refrigerated well and top plate

111	3552105	SELF-SERVICE ELEMENT WITH REFRIGERATED TANK SICR-16	2.968,00
	3552106	SELF-SERVICE ELEMENT WITH COLD PLATE SIFP-16 (1600x700)	3.074,00



Bain-Marie element (with and without reserve)

112	3532101	SELF-SERVICE BAIN-MARIE WITH RESERVE SBMR-311 (1200x700)	2.778,00
	3532102	SELF-SERVICE BAIN-MARIE WITH RESERVE SBMR-411 (1600x700)	3.085,00
	3532103	SELF-SERVICE BAIN-MARIE SBM-311 (1200x700)	2.120,00
	3532104	SELF-SERVICE BAIN-MARIE SBM-411 (1600x700)	2.385,00

Bain-Marie central island

112	3532108	SELF-SERVICE BAIN-MARIE SIBM-411 (1600x700)	2.650,00
-----	---------	---	----------



Hot elements

113	3532105	SELF-SERVICE HOT ELEMENT SMC-12 (1200x700)	1.834,00
	3532106	SELF-SERVICE HOT ELEMENT SMC-16 (1600x700)	2.173,00

Neutral elements

113	3512101	SELF-SERVICE NEUTRAL ELEMENT SMN-8	870,00
	3512102	SELF-SERVICE NEUTRAL ELEMENT SMN-12	1.060,00
	3512103	SELF-SERVICE NEUTRAL ELEMENT SMN-16	1.378,00



Constant-level dish dispensing element

114	3512116	SELF-SERVICE NEUTRAL ELEMENT SDPN-40	1.484,00
	3512117	SELF-SERVICE NEUTRAL ELEMENT SDPN-80	1.908,00
	3532113	SELF-SERVICE HOT ELEMENT SDPC-40	1.802,00
	3532114	SELF-SERVICE HOT ELEMENT SDPC-80	2.226,00
	3793104	LID FOR DISHES DISPENSER TDP-28	48,00



Item for plate dispenser trolley

115	3512113	SELF-SERVICE ELEMENT FOR TROLLEY CPC2-28 MODELO SMNU-13	1.135,00
-----	---------	---	----------

Neutral element to dispense dish baskets

115	3512118	SELF-SERVICE NEUTRAL ELEMENT FOR BASKETS SDCN-80	1.696,00
-----	---------	--	----------

Table for cashier

116	3512115	SELF-SERVICE CASH-TABLE SMNC-14	1.474,00
-----	---------	---------------------------------	----------

Elements for cashier

116	3512104	SELF-SERVICE CASH-ELEMENT SC-D	1.166,00
	3512105	SELF-SERVICE ELEMENT CAJA SC-I	1.166,00

Angle element

117	3512106	SELF-SERVICE EXTERNAL ANGLE ELEMENT 90° SAE-90	986,00
	3512107	SELF-SERVICE INTERNAL ANGLE ELEMENT 90° SAI-90	1.055,00
	3512110	SELF-SERVICE EXTERNAL ANGLE ELEMENT 45° SAE-45	1.071,00
	3512111	SELF-SERVICE INTERNAL ANGLE ELEMENT 45° SAI-45	1.113,00



Page Catalogue	Reference	Article - Model	Price € Nov 2011
----------------	-----------	-----------------	---------------------



Bread ramp and cutlery holder

118	3512108	SELF-SERVICE BREAD DISPENSER STPB-80	1.325,00
	3512112	SELF-SERVICE TABLE TOP BREAD DISPENSER STPC-80	901,00
	3512109	SELF-SERVICE GLASSES DISPENSER SDV-80	1.320,00
	3512114	SELF-SERVICE TABLE TOP GLASSES DISPENSER SDVSM-80	557,00

Neutral glass shelves with stainless steel stands

119	3592106	SELF-SERVICE SET OF 2 SUPPORTS (LEFT AND RIGHT) FOR 1 SHELF	175,00
	3592107	SELF-SERVICE SSET OF 2 SUPPORTS (LEFT AND RIGHT) FOR 2	250,00
	3592108	SELF-SERVICE CURVED GLASS SCRE-8 (FOR 800 mm ELEMENT)	207,00
	3592109	SELF-SERVICE CURVED GLASS SCRE-12 (FOR 1200 mm ELEMENT)	265,00
	3592110	SELF-SERVICE CURVED GLASS SCRE-16 (FOR 1600 mm ELEMENT)	276,00
	3592111	SELF-SERVICE FRONT GLASS SCRF-8 (FOR 800 mm ELEMENT)	91,00
	3592112	SELF-SERVICE FRONT GLASS SCRF-12 (FOR 1200 mm ELEMENT)	128,00
	3592113	SELF-SERVICE FRONT GLASS SCRF-16 (FOR 1600 mm ELEMENT)	138,00



Shelves with light or with light and heat

120	3592122	SHELF-ELEMENT WITH LIGHT AND HEAT SECAL-8 (800 mm)	477,00
	3592123	SHELF-ELEMENT WITH LIGHT AND HEAT SECAL-12 (1200 mm)	568,00
	3592124	SHELF-ELEMENT WITH LIGHT AND HEAT SECAL-16 (1600 mm)	594,00
	3592126	SHELF-ELEMENT WITH LIGHT SEL-12 (1200 mm)	520,00
	3592127	SHELF-ELEMENT WITH LIGHT SEL-16 (1600 mm)	546,00



Structures with light or light and heat for central island

120	3592114	SELF-SERVICE COMPLETE SHELF-STRUCTURE LIGHT SSIL-16	636,00
	3592115	SELF-SERVICE COMPLETE SHELF-STRUCTURE LIGHT AND HEAT	742,00

Tray Slider

121	3592163	SELF-SERVICE TRAY SLIDER SCB-4 (400 mm)	186,00
	3592101	SELF-SERVICE TRAY SLIDER SCB-8 (800 mm)	202,00
	3592102	SELF-SERVICE TRAY SLIDER SCB-12 (1200 mm)	218,00
	3592147	SELF SERVICE TRAY SLIDER SCB-13 (1300 mm)	239,00
	3592156	SELF-SERVICE TRAY SLIDER SCB-14 (1400 mm)	265,00
	3592103	SELF-SERVICE TRAY SLIDER SCB-16 (1600 mm)	276,00
	3592104	SELF-SERVICE TRAY SLIDER EXTERNAL ANGLE 90° SCBAE-90	297,00
	3592136	SELF-SERVICE TRAY SLIDER INTERNAL ANGLE 45° SCBAE-45	308,00



Plate placer

121	3592105	SELF-SERVICE PLATE PLACER SP-60	170,00
-----	---------	---------------------------------	--------



Page Catalogue	Reference	Article - Model	Price € Nov 2011
----------------	-----------	-----------------	---------------------

Decorative panels

122	3592165	DECORATIVE PANEL GREEN CAPRI SPV-4 (400 mm)	117,00
	3592130	DECORATIVE PANEL GREEN CAPRI SPV-8 (800 mm)	218,00
	3592131	DECORATIVE PANEL GREEN CAPRI SPV-12 (1200 mm)	255,00
	3592149	DECORATIVE PANEL GREEN CAPRI SPV-13 (1300 mm)	276,00
	3592162	DECORATIVE PANEL GREEN CAPRI SPV-14 (1400 mm)	287,00
	3592132	DECORATIVE PANEL GREEN CAPRI SPV-16 (1600 mm)	318,00
	3592139	DECORATIVE PANEL GREEN CAPRI SPV-12 F (1200 mm - for cold element)	297,00
	3592140	DECORATIVE PANEL GREEN CAPRI SPV-16 F (1600 mm - for cold element)	409,00
	3592138	DECORATIVE PANEL GREEN CAPRI EXTERNAL ANGLE 90° SPV-90 AE	239,00
	3592144	DECORATIVE PANEL GREEN CAPRI INTERNAL ANGLE 90° SPV-90 AI	239,00
	3592160	DECORATIVE PANEL GREEN CAPRI EXTERNAL ANGLE 45° SPV-45 AE	197,00
	3592164	DECORATIVE PANEL RED BEAUJOLAIS SPR-4 (400 mm)	170,00
	3592133	DECORATIVE PANEL RED BEAUJOLAIS SPR-8 (800 mm)	212,00
	3592134	DECORATIVE PANEL RED BEAUJOLAIS SPR-12 (1200 mm)	260,00
	3592150	DECORATIVE PANEL RED BEAUJOLAIS SPR-13 (1300 mm)	276,00
	3592161	DECORATIVE PANEL RED BEAUJOLAIS SPR-14 (1400 mm)	287,00
	3592135	DECORATIVE PANEL RED BEAUJOLAIS SPR-16 (1600 mm)	297,00
	3592142	DECORATIVE PANEL RED BEAUJOLAIS SPR-12 F (1200 mm - for cold element)	318,00
	3592143	DECORATIVE PANEL RED BEAUJOLAIS SPR-16 F (1600 mm - for cold element)	329,00
	3592141	DECORATIVE PANEL RED BEAUJOLAIS EXTERNAL ANGLE 90° SPR-90	234,00
	3592145	DECORATIVE PANEL RED BEAUJOLAIS INTERNAL ANGLE 90° SPR-90 AI	234,00
	3592152	DECORATIVE PANEL RED BEAUJOLAIS EXTERNAL ANGLE 45° SPR-45	228,00



Wheels

123	3592116	SELF-SERVICE KIT 4 WHEELS S4R	165,00
-----	---------	-------------------------------	--------



Kicking strip

123	3592166	KICKING STRIP SZ-4 (400 mm)	75,00
	3592119	KICKING STRIP SZ-8 (800 mm)	91,00
	3592120	KICKING STRIP SZ-12 (1200 mm)	133,00
	3592148	KICKING STRIP SZ-13 (1300 mm)	144,00
	3592157	KICKING STRIP SZ-14 (1400 mm)	159,00
	3592121	KICKING STRIP SZ-16 (1600 mm)	181,00
	3592159	KICKING STRIP - SIDE UNIT - SZL-7 (700 mm)	96,00
	3592137	KICKING STRIP EXTERNAL ANGLE 90° SZAE-90	112,00
	3592146	KICKING STRIP INTERNAL ANGLE 90° SZAI-90	112,00
	3592151	KICKING STRIP EXTERNAL ANGLE 45° SZAE-45	106,00
	3592153	KICKING STRIP INTERNAL ANGLE 45° SZAI-45	106,00



Perforated bottoms for reigerated wells

123	3752117	PERFORATED BOTTOM FOR REFRIGERATED WELL FPCF11 (GN 1/1)	59,00
-----	---------	---	-------



Page Catalogue	Reference	Article - Model	Price € Nov 2011
----------------	-----------	-----------------	---------------------

ELEMENTS FOR BUFFET

Refrigerated wells with built-in compressor



124	3752111	REFRIGERATED WELL CF3G-7-GI (3 GN 1/1 65 mm)	944,00
	3752112	REFRIGERATED WELL CF4G-7-GI (4 GN 1/1 65 mm)	1.034,00
	3752113	REFRIGERATED WELL CF5G-7-GI (5 GN 1/1 65 mm)	1.140,00

Refrigerated plates with built-in compressor

124	3752114	COLD PLATE CPH-3G-GI (3 GN 1/1)	933,00
	3752115	COLD PLATE CPH-4G-GI (4 GN 1/1)	1.018,00
	3752116	COLD PLATE CPH-5G-GI (5 GN 1/1)	1.124,00

Refrigerated wells (without compressor)



125	3752101	REFRIGERATED WELL CF3G-7 (3 GN 1/1 65 mm)	504,00
	3752102	REFRIGERATED WELL CF4G-7 (4 GN 1/1 65 mm)	562,00
	3752103	REFRIGERATED WELL CF5G-7 (5 GN 1/1 65 mm)	711,00
	3752104	REFRIGERATED WELL CF3G-16 (3 GN 1/1 150 mm)	647,00
	3752105	REFRIGERATED WELL CF4G-16 (4 GN 1/1 150 mm)	705,00
	3752106	REFRIGERATED WELL CF5G-16 (5 GN 1/1 150 mm)	764,00

Refrigerated plates (without compressor)

125	3752107	COLD PLATE CPH-3G (3 GN 1/1)	424,00
	3752108	COLD PLATE CPH-4G (4 GN 1/1)	520,00
	3752109	COLD PLATE CPH-5G (5 GN 1/1)	647,00

Well for ice cream (with reserve for 4 wells)



125	3752110	WELL FOR ICE CREAM CH-4	647,00
-----	---------	-------------------------	--------

Perforated bottoms for refrigerated wells

125	3752117	PERFORATED BOTTOM FOR REFRIGERATED WELL FPCF11 (GN 1/1)	53,0
-----	---------	---	------

Hot Bain-Marie well (dry heat)



126	3732101	HOT BAIN-MARIE WELL CCGN-2 (2 GN 1/1)	483,00
	3732102	HOT BAIN-MARIE WELL CCGN-3 (3 GN 1/1)	626,00
	3732103	HOT BAIN-MARIE WELL CCGN-4 (4 GN 1/1)	764,00
	3732104	HOT BAIN-MARIE WELL CCGN-5 (5 GN 1/1)	944,00

Shields with light and heat (glass not included)



127	3772101	SHIELD WITH LIGHT AND HEAT PBLC-211 (Length 857 mm)	430,00
	3772102	SHIELD WITH LIGHT AND HEAT PBLC-311 (Length 1182 mm)	515,00
	3772103	SHIELD WITH LIGHT AND HEAT PBLC-411 (Length 1507 mm)	615,00
	3772104	SHIELD WITH LIGHT AND HEAT PBLC-511 (Length 1832 mm)	711,00

Shields with light (glass not included)



127	3772105	SHIELD WITH LIGHT PBL-211 (Length 857 mm)	398,00
	3772106	SHIELD WITH LIGHT PBL-311 (Length 1182 mm)	467,00
	3772107	SHIELD WITH LIGHT PBL-411 (Length 1507 mm)	520,00
	3772108	SHIELD WITH LIGHT PBL-511 (Length 1832 mm)	573,00

Glasses

127	3772109	GLASS FOR SHIELD V-211 (For PBLC-211/PBL-211)	361,00
	3772110	GLASS FOR SHIELD V-311 (For PBLC-311/PBL-311)	414,00
	3772111	GLASS FOR SHIELD V-411 (For PBLC-411/PBL-411)	477,00
	3772112	GLASS FOR SHIELD V-511 (For PBLC-511/PBL-511)	520,00

Neutral dish dispenser



128	3782101	NEUTRAL DISHES DISPENSER DPN-28	350,00
	3782102	NEUTRAL DISHES DISPENSER DPN-34	382,00



Page Catalogue	Reference	Article - Model	Price € Nov 2011
----------------	-----------	-----------------	---------------------



Hot dish dispenser

128	3782103	HOT DISHES DISPENSER DPC-28	742,00
	3782104	HOT DISHES DISPENSER DPC-34	848,00

Lids for hot dispenser

128	3793104	LID FOR DISHES DISPENSER TDP-28	59,00
	3793105	LID FOR DISHES DISPENSER TDP-34	59,00



Dish basket neutral dispenser

129	3782105	NEUTRAL DISPENSER FOR DISHES BASKETS DCN-55	520,00
-----	---------	---	--------

Chaffing dish

129	3796101	CHAFFING DISH WITH REMOVABLE LID CHD	324,00
	3796102	CHAFFING DISH WITH FOLDING LID CHD-E	536,00
	3796106	ELECTRIC CHAFFING DISH WITH REMOVABLE LID CHD-EL	568,00
	3796107	ELECTRIC CHAFFING DISH WITH FOLDING LID CHD-E-EL	753,00
	3796103	GEL ALCOHOL CAN ALC-225	3,00
	3796108	HEATING ELEMENT ELC	239,00





Reference	Article - Model	Price € Nov 2011
-----------	-----------------	---------------------

DROP-IN - ELEMENTS FOR BUFFET AND SELF-SERVICE

Refrigerated plates

3852102	REFRIGERATED PLATE PRGI-311	3 GN 1/1	1.635,00
3852103	REFRIGERATED PLATE PRGI-411	4 GN 1/1	1.721,00
3852104	REFRIGERATED PLATE PRGI-511	5 GN 1/1	1.861,00

Refrigerated plates 2 levels

3852106	REFRIGERATED PLATE 2 LEVELS PR2GI-311	3 GN 1/1	1.962,00
3852107	REFRIGERATED PLATE 2 LEVELS PR2GI-411	4 GN 1/1	2.066,00
3852108	REFRIGERATED PLATE 2 LEVELS PR2GI-511	5 GN 1/1	2.234,00

Refrigerated wells by static system

3852110	REFRIGERATED WELL CRGI-311	3 GN 1/1	1.797,00
3852111	REFRIGERATED WELL CRGI-411	4 GN 1/1	2.008,00
3852112	REFRIGERATED WELL CRGI-511	5 GN 1/1	2.247,00

Refrigerated wells by ventilated system

3852115	REFRIGERATED WELL CRVGI-311	3 GN 1/1	2.426,00
3852116	REFRIGERATED WELL CRVGI-411	4 GN 1/1	2.711,00
3852117	REFRIGERATED WELL CRVGI-511	5 GN 1/1	2.966,00

Well for frozen products

3852120	WELL FOR FROZEN PRODUCTS CMCGI	4 CH 1/3	1.988,00
---------	--------------------------------	----------	----------

Bain-marie wells by ventilated dry heat

3832102	BAIN-MARIE WELL CBMS-311	3 GN 1/1	1.213,00
3832103	BAIN-MARIE WELL CBMS-411	4 GN 1/1	1.420,00
3832104	BAIN-MARIE WELL CBMS-511	5 GN 1/1	1.788,00

Bain-marie wells with water

3832110	BAIN-MARIE WELL WITH WATER CBMA-111	1 GN 1/1	980,00
3832111	BAIN-MARIE WELL WITH WATER CBMA-211	2 GN 1/1	1.163,00
3832112	BAIN-MARIE WELL WITH WATER CBMA-311	3 GN 1/1	1.522,00
3832113	BAIN-MARIE WELL WITH WATER CBMA-411	4 GN 1/1	1.684,00
3832114	BAIN-MARIE WELL WITH WATER CBMA-511	5 GN 1/1	1.980,00

Hot glass-ceramic plates

3832121	GLASS-CERAMIC PLATE PV-211	2 GN 1/1	1.277,00
3832122	GLASS-CERAMIC PLATE PV-311	3 GN 1/1	1.497,00
3832123	GLASS-CERAMIC PLATE PV-411	4 GN 1/1	1.767,00
3832124	GLASS-CERAMIC PLATE PV-511	5 GN 1/1	1.995,00

Hot glass-ceramic plates with heat source

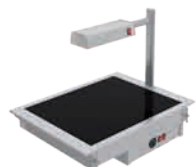
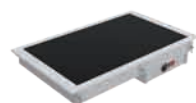
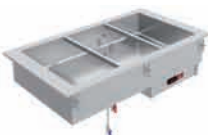
3832127	HOT GLASS-CERAMIC WITH HEAT SOURCE PVP-211	2 GN 1/1	1.780,00
---------	--	----------	----------

Ventilated refrigerated displays with removable doors

3862101	VENTILATED REFRIGERATED DISPLAY VRA-CV-311	3 GN 1/1	5.406,00
3862102	VENTILATED REFRIGERATED DISPLAY VRA-CV-411	4 GN 1/1	5.887,00
3862103	VENTILATED REFRIGERATED DISPLAY VRA-CV-CT-311	3 GN 1/1	5.491,00
3862104	VENTILATED REFRIGERATED DISPLAY VRA-CV-CT-411	4 GN 1/1	6.005,00
3862105	VENTILATED REFRIGERATED DISPLAY VRC-CV-CR-311	3 GN 1/1	5.609,00
3862106	VENTILATED REFRIGERATED DISPLAY VRC-CV-CR-411	4 GN 1/1	6.101,00

Ventilated wall refrigerated displays

3862107	VENTILATED WALL REFRIGERATED DISPLAY VRM-CV-311	3 GN 1/1	5.027,00
3862108	VENTILATED WALL REFRIGERATED DISPLAY VRM-CV-411	4 GN 1/1	5.475,00
3862109	VENTILATED WALL REFRIGERATED DISPLAY VRM-CV-CT-	3 GN 1/1	5.107,00
3862110	VENTILATED WALL REFRIGERATED DISPLAY VRM-CV-CT-	4 GN 1/1	5.584,00





Reference	Article - Model	Price € Nov 2011
Ventilated refrigerated displays with lower well		
3862111	VENTILATED REFRIGERATED DISPLAY CON CUBA INFERIOR VR-C- 3 GN 1/1	4.860,00
3862112	VENTILATED REFRIGERATED DISPLAY CON CUBA INFERIOR VR-C- 4 GN 1/1	5.948,00
Independent refrigerated displays		
3862113	VITRINA REFRIGERADA INDEPENDIENTE VRISF-311	3 GN 1/1 4.499,00
3862114	VITRINA REFRIGERADA INDEPENDIENTE VRISF-411	4 GN 1/1 4.964,00
3862115	VITRINA REFRIGERADA INDEPENDIENTE VRIF-311	3 GN 1/1 4.831,00
3862116	VITRINA REFRIGERADA INDEPENDIENTE VRIF-411	4 GN 1/1 5.348,00
Closed refrigerated displays with light		
3862120	VITRINA EXPOSITORA CERRADA VIL-211	2 GN 1/1 1.755,00
3862121	VITRINA EXPOSITORA CERRADA VIL-311	3 GN 1/1 1.982,00
3862122	VITRINA EXPOSITORA CERRADA VIL-411	4 GN 1/1 2.174,00
Refrigerated displays with heat		
3862124	REFRIGERATED DISPLAY WITH HEAT VIC-211	2 GN 1/1 1.804,00
3862125	REFRIGERATED DISPLAY WITH HEAT VIC-311	3 GN 1/1 2.067,00
3862126	REFRIGERATED DISPLAY WITH HEAT VIC-411	4 GN 1/1 2.292,00
Open refrigerated displays with base and light		
3862128	OPEN REFRIGERATED DISPLAY WITH LIGHT VFIL-211	2 GN 1/1 1.999,00
3862129	OPEN REFRIGERATED DISPLAY WITH LIGHT VFIL-311	3 GN 1/1 2.292,00
3862130	OPEN REFRIGERATED DISPLAY WITH LIGHT VFIL-411	4 GN 1/1 2.524,00
Open refrigerated displays with light and shelf		
3862132	OPEN REFRIGERATED DISPLAY WITH LIGHT AND SHELF VIAL-211	2 GN 1/1 1.702,00
3862133	OPEN REFRIGERATED DISPLAY WITH LIGHT AND SHELF VIAL-311	3 GN 1/1 1.923,00
3862134	OPEN REFRIGERATED DISPLAY WITH LIGHT AND SHELF VIAL-411	4 GN 1/1 2.108,00
Glass shelf for display		
3882130	GLASS SHELF FOR DISPLAY DROP-IN EC-211	2 GN 1/1 142,00
3882131	GLASS SHELF FOR DISPLAY DROP-IN EC-311	3 GN 1/1 161,00
3882132	GLASS SHELF FOR DISPLAY DROP-IN EC-411	4 GN 1/1 179,00
Screens with light		
3872101	SCREEN WITH LIGHT PL-211	2 GN 1/1 507,00
3872102	SCREEN WITH LIGHT PL-311	3 GN 1/1 557,00
3872103	SCREEN WITH LIGHT PL-411	4 GN 1/1 603,00
3872104	SCREEN WITH LIGHT PL-511	5 GN 1/1 657,00
Screens with heat		
3872105	SCREEN WITH HEAT PC-211	2 GN 1/1 589,00
3872106	SCREEN WITH HEAT PC-311	3 GN 1/1 685,00
3872107	SCREEN WITH HEAT PC-411	4 GN 1/1 779,00
3872108	SCREEN WITH HEAT PC-511	5 GN 1/1 874,00
Heat source for temperature maintenance		
3872110	HEAT SOURCE FOR TEMPERATURE MAINTENANCE PMC	585,00
Support for curved glass		
3882101	SUPPORT FOR CURVED GLASS SPCC	235,00
Support for front glass		
3882102	SUPPORT FOR FRONT GLASS SPCF-L	Side 281,00
3882103	SUPPORT FOR FRONT GLASS SPCF-C	Central 188,00
Support for front glass and upper shelf		
3882104	SUPPORT FOR FRONT GLASS AND UPPER SHELF SPCFE-L	Side 338,00
3882105	SUPPORT FOR FRONT GLASS AND UPPER SHELF SPCFE-C	Central 225,00





Reference	Article - Model	Price € Nov 2011
-----------	-----------------	---------------------



Support for tilted front glass

3882107	SUPPORT FOR TILTED FRONT GLASS SPCI-L	Side	273,00
3882108	SUPPORT FOR TILTED FRONT GLASS SPCI-C	Central	182,00

Shelf-kit with 2 glass shelves

3882111	SHELF-KIT WITH 2 SHELVES EN2C-211	2 GN 1/1	432,00
3882112	SHELF-KIT WITH 2 SHELVES EN2C-311	3 GN 1/1	498,00
3882113	SHELF-KIT WITH 2 SHELVES EN2C-411	4 GN 1/1	560,00

Column support with 3 shelves

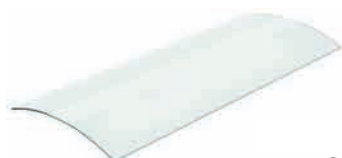
3882109	COLUMN SUPPORT WITH 3 SHELVES S3E		287,00
---------	-----------------------------------	--	--------

Trays and cutlery holder

3882110	TRAYS AND CUTLERY HOLDER SUV-211	2 GN 1/1	949,00
---------	----------------------------------	----------	--------

Wells for dishes and trays

3892103	NEUTRAL WELL FOR DISHES CP		452,00
3892104	HOT WELL FOR DISHES CPC		764,00

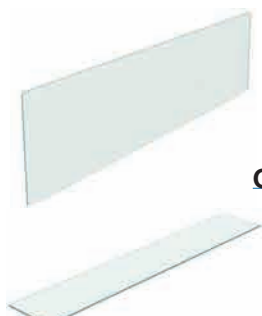


Curved shield glasses

3882116	CURVED SHIELD GLASS CC-211	2 GN 1/1	269,00
3882117	CURVED SHIELD GLASS CC-311	3 GN 1/1	321,00
3882118	CURVED SHIELD GLASS CC-411	4 GN 1/1	347,00
3882119	CURVED SHIELD GLASS CC-511	5 GN 1/1	387,00

Shield glasses

3882120	VERTICAL SHIELD GLASS CF-211	2 GN 1/1	120,00
3882121	VERTICAL SHIELD GLASS CF-311	3 GN 1/1	138,00
3882122	VERTICAL SHIELD GLASS CF-411	4 GN 1/1	151,00
3882123	VERTICAL SHIELD GLASS CF-511	5 GN 1/1	168,00



Glass shelves

3882124	GLASS SHELF CE-211	2 GN 1/1	121,00
3882125	GLASS SHELF CE-311	3 GN 1/1	145,00
3882126	GLASS SHELF CE-411	4 GN 1/1	167,00

Digital Thermometer Kit to place on the shields

3892102	KIT DIGITAL THERMOMETER TDP		59,50
---------	-----------------------------	--	-------



Kit supports for shields

3892101	KIT SUPPORT KS		51,60
---------	----------------	--	-------

Cooking modular elements

4036101	GAS BOLING TOP 40 cm.. ECG-40	2 burners	992,00
4016110	ELECTRIC RANGE 40 cm.. ECE-40	2 plates	745,00
4016101	GLASS-CEERAMIC RANGE 40 cm.. ECV-40	2 areas	1.535,00
4016103	ELECTRIC FRYER 40. EFE-40 cm.	8 litres	1.669,00
4016104	CHIPS SCUTTLE 40. ECFE-40 cm.	GN 1/1 150 mm	1.056,00
4016111	CHROMIUM ELECTRIC FRYTOP 40 cm. EPCE-40	1 area	1.937,00
4016106	CHROMIUM ELECTRIC FRYTOP 60 cm. EPCE-60	1 area	2.378,00
4016107	CHROMIUM ELECTRIC FRYTOP 80 cm. EPCE-80	2 areas	2.562,00
4016108	ELECTRIC CHARCOAL 60 cm. EGE-60	2 areas	2.084,00
4016105	ELECTRIC PASTA COOKER 40 cm. ECPE-40	15 litres	1.484,00
4016102	ELECTRIC BAIN-MARIE 40 cm. EBME-40	GN 1/1 150 mm	1.048,00
4416105	INDUCTION HOB 2000 W. IE-20	MAX. Ø 260 mm	926,00
4416103	INDUCTION HOB 3500 W. IE-35	MAX. Ø 260 mm	2.159,00
4416106	INDUCTION WOK 3500 W. IWE-35	WOK	2.776,00





Reference	Article - Model	Price € Nov 2011
-----------	-----------------	---------------------

GASTROBUFFET ELEMENTS JUNO SERIES

**Refrigerated plates Juno Series**

3612230	REFRIGERATED PLATE MAROON COLOUR JPR-311 G	3 GN 1/1	3.034,00
3612231	REFRIGERATED PLATE BLACK COLOUR JPR-311 N	3 GN 1/1	3.034,00
3612232	REFRIGERATED PLATE POLYLAMINATE COATING JPR-311 P	3 GN 1/1	3.034,00
3612245	REFRIGERATED PLATE MAROON COLOUR JPR-411 G	4 GN 1/1	3.205,00
3612246	REFRIGERATED PLATE BLACK COLOUR JPR-411 N	4 GN 1/1	3.205,00
3612247	REFRIGERATED PLATE POLYLAMINATE COATING JPR-411 P	4 GN 1/1	3.205,00

**Refrigerated wells Juno Series**

3612201	REFRIGERATED WELL MAROON COLOUR JCR-311 G	3 GN 1/1	3.128,00
3612202	REFRIGERATED WELL BLACK COLOUR JCR-311 N	3 GN 1/1	3.128,00
3612203	REFRIGERATED WELL POLYLAMINATE COATING JCR-311 P	3 GN 1/1	3.128,00
3612215	REFRIGERATED WELL MAROON COLOUR JCR-411 G	4 GN 1/1	3.304,00
3612216	REFRIGERATED WELL BLACK COLOUR JCR-411 N	4 GN 1/1	3.304,00
3612217	REFRIGERATED WELL POLYLAMINATE COATING JCR-411 P	4 GN 1/1	3.304,00

**Hot wells Bain-Marie Juno Series**

3612301	CUBA CALIENTE BAIN-MARIE MAROON COLOUR JCBM-311 G	3 GN 1/1	3.280,00
3612302	CUBA CALIENTE BAIN-MARIE BLACK COLOUR JCBM-311 N	3 GN 1/1	3.280,00
3612303	CUBA CALIENTE BAIN-MARIE POLYLAMINATE COATING JCBM-311 P	3 GN 1/1	3.280,00
3612315	CUBA CALIENTE BAIN-MARIE MAROON COLOUR JCBM-411 G	4 GN 1/1	3.510,00
3612316	CUBA CALIENTE BAIN-MARIE BLACK COLOUR JCBM-411 N	4 GN 1/1	3.510,00
3612317	CUBA CALIENTE BAIN-MARIE POLYLAMINATE COATING JCBM-411 P	4 GN 1/1	3.510,00

**Glass-ceramic plates Juno Series**

3612330	HOT GLASS-CERAMIC PLATE MAROON COLOUR JPV-311 G	3 GN 1/1	3.608,00
3612331	HOT GLASS-CERAMIC PLATE BLACK COLOUR JPV-311 N	3 GN 1/1	3.608,00
3612332	HOT GLASS-CERAMIC PLATE POLYLAMINATE COATING JPV-311 P	3 GN 1/1	3.608,00
3612345	HOT GLASS-CERAMIC PLATE MAROON COLOUR JPV-411 G	4 GN 1/1	3.861,00
3612346	HOT GLASS-CERAMIC PLATE BLACK COLOUR JPV-411 N	4 GN 1/1	3.861,00
3612347	HOT GLASS-CERAMIC PLATE POLYLAMINATE COATING JPV-411 P	4 GN 1/1	3.861,00

**Neutral elements Juno Series**

3612101	NEUTRAL ELEMENT MAROON COLOUR JEN-311 G	3 GN 1/1	2.530,00
3612102	NEUTRAL ELEMENT BLACK COLOUR JEN-311 N	3 GN 1/1	2.530,00
3612103	NEUTRAL ELEMENT POLYLAMINATE COATING JEN-311 P	3 GN 1/1	2.530,00
3612115	NEUTRAL ELEMENT MAROON COLOUR JEN-411 G	4 GN 1/1	2.680,00
3612116	NEUTRAL ELEMENT BLACK COLOUR JEN-411 N	4 GN 1/1	2.680,00
3612117	NEUTRAL ELEMENT ACABADO POLILAMINADO JEN-411 P	4 GN 1/1	2.680,00

**Wall elements with refrigerated well Juno Series**

3612415	WALL UNIT WITH REFR. WELL - MAROON COLOUR JMCR-411 G	4 GN 1/1	3.964,00
3612416	WALL UNIT WITH REFR. WELL - BLACK COLOUR JMCR-411 N	4 GN 1/1	3.964,00
3612417	WALL UNIT WITH REFR. WELL - POLYLAMINATE COATING JMCR-	4 GN 1/1	3.964,00



Reference	Article - Model	Price € Nov 2011
-----------	-----------------	---------------------

GASTROBUFFET ELEMENTS VULCANO SERIES

Refrigerated plates Vulcano Series

3622230	REFRIGERATED PLATE WOOD FINISHING VPR-311 M	3 GN 1/1	3.807,00
3622231	REFRIGERATED PLATE BLACK COLOUR VPR-311 N	3 GN 1/1	3.807,00
3622245	REFRIGERATED PLATE WOOD FINISHING VPR-411 M	4 GN 1/1	4.192,00
3622246	REFRIGERATED PLATE BLACK COLOUR VPR-411 N	4 GN 1/1	4.192,00

Refrigerated wells Vulcano Series

3622201	REFRIGERATED WELL WOOD FINISHING VCR-311 M	3 GN 1/1	3.925,00
3622202	REFRIGERATED WELL BLACK COLOUR VCR-311 N	3 GN 1/1	3.925,00
3622215	REFRIGERATED WELL WOOD FINISHING VCR-411 M	4 GN 1/1	4.321,00
3622216	REFRIGERATED WELL BLACK COLOUR VCR-411 N	4 GN 1/1	4.321,00

Hot wells Bain-Marie Vulcano Series

3622301	HOT WELL BAIN-MARIE WOOD FINISHING VCBM-311 M	3 GN 1/1	3.949,00
3622302	HOT WELL BAIN-MARIE BLACK COLOUR VCBM-311 N	3 GN 1/1	3.949,00
3622315	HOT WELL BAIN-MARIE WOOD FINISHING VCBM-411 M	4 GN 1/1	4.431,00
3622316	HOT WELL BAIN-MARIE BLACK COLOUR VCBM-411 N	4 GN 1/1	4.431,00

Neutral elements Vulcano Series

3622101	NEUTRAL ELEMENT WOOD FINISHING VEN-311 M	3 GN 1/1	3.179,00
3622102	NEUTRAL ELEMENT BLACK COLOUR VEN-311 N	3 GN 1/1	3.179,00
3622115	NEUTRAL ELEMENT WOOD FINISHING VEN-411 M	4 GN 1/1	3.474,00
3622116	NEUTRAL ELEMENT BLACK COLOUR VEN-411 N	4 GN 1/1	3.474,00

Hot glass-ceramic plates Vulcano Series

3622330	HOT GLASS-CERAMIC PLATE WOOD FINISHING VPV-311 M	3 GN 1/1	4.385,00
3622331	HOT GLASS-CERAMIC PLATE BLACK COLOUR VPV-311 N	3 GN 1/1	4.385,00
3622345	HOT GLASS-CERAMIC PLATE WOOD FINISHING VPV-411 M	4 GN 1/1	4.854,00
3622346	HOT GLASS-CERAMIC PLATE BLACK COLOUR VPV-411 N	4 GN 1/1	4.854,00

Wall elements with refrigerated well Vulcano Series

3622415	WALL UNIT WITH REFRIG. WELL WOOD FINISHING VMCR-411 M	4 GN 1/1	4.829,00
3622416	WALL UNIT WITH REFRIG. WELL BLACK COLOUR VMCR-411 N	4 GN 1/1	4.829,00

Elements with rear access and refrigerated well Vulcano Series

3622515	ELEMENT WITH REAR ACCESS WOOD FINISHING VACR-411 M	4 GN 1/1	4.438,00
3622516	ELEMENT WITH REAR ACCESS BLACK COLOUR VACR-411 N	4 GN 1/1	4.438,00

Closed elements with refrigerated well Vulcano Series

3622615	ELEMENT WITH REFRIG. WELL WOOD FINISHING VCCR-411 M	4 GN 1/1	4.598,00
3622616	ELEMENT WITH REFRIG. WELL BLACK COLOUR VCCR-411 N	4 GN 1/1	4.598,00

Island elements with refrigerated well Vulcano Series

3622701	ISLAND WITH REFRIG. WELL WOOD FINISHING VCUCR-811 M	8 GN 1/1	7.350,00
3622702	ISLAND WITH REFRIG. WELL BLACK COLOUR VCUCR-811 N	8 GN 1/1	7.350,00





Reference	Article - Model	Price € Nov 2011
-----------	-----------------	---------------------

GASTROBUFFET ACCESSORIES

Juno Series

3632101	Lifting mechanism of the protective screen MEP	-	550,00
---------	--	---	--------

Juno Series and Vulcano Series

3632102	TRAY SLIDER SUPPLEMENT SAP-311	3 GN 1/1	205,00
3632103	TRAY SLIDER SUPPLEMENT SAP-411	4 GN 1/1	217,00
3632104	TRAY SLIDER SUPPLEMENT FOR ISLAND SAPC	4 Sides	480,00

Note: Refrigerated models of the Vulcan Series have an electric mechanism to lift the shield.



COMPLEMENTARY MACHINES

Vacuum packers - Time-controlled**Desktop packers**

134	4615101	VACUUM PACKER VAC-6 T	3.200,00
-----	---------	-----------------------	----------

Desktop packers with digital controls

134	4615202	VACUUM PACKER VAC-10 DT	4.200,00
	4615203	VACUUM PACKER VAC-20 DT	4.400,00
	4615207	VACUUM PACKER VAC-20 DT L	5.100,00
	4615208	VACUUM PACKER VAC-20 DT L2A	5.300,00

Vertical packers with digital controls

134	4615204	VACUUM PACKER VAC-40 DT	6.200,00
	4615205	VACUUM PACKER VAC-63 DT	6.600,00
	4615206	VACUUM PACKER VAC-100 DT	9.900,00
	4635101	SUPLEMENT.SIST.GASTROVAC GVAC	130,00

Vacuum packers - Sensor-controlled**Desktop packers with digital controls**

135	4625102	VACUUM PACKER VAC-10 S	4.300,00
	4625103	VACUUM PACKER VAC-20 S	4.600,00
	4625107	VACUUM PACKER VAC-20 S L	5.600,00
	4625108	VACUUM PACKER VAC-20 S L 2A	5.750,00

Vertical packers with digital controls

135	4625104	VACUUM PACKER VAC-40 S	8.800,00
	4625105	VACUUM PACKER VAC-63 S	9.875,00
	4625106	VACUUM PACKER VAC-100 S	12.000,00
	4635101	SUPPLEMENT SYST. GASTROVAC GVAC	130,00

Gastro-VAC system

137	4635101	SUPPLEMENT SYST.GASTROVAC GVAC	130,00
-----	---------	--------------------------------	--------

Gastronorm containers for vacuum pack Gastro-VAC

	2076101	CONTAINER GASTRO-VAC GNVR-11100	90,00
	2076102	CONTAINER GASTRO-VAC GNVR-11150	120,00
	2076103	CONTAINER GASTRO-VAC GNVR-11200	135,00
	2076104	CONTAINER GASTRO-VAC GNVR-12100	50,00
	2076105	CONTAINER GASTRO-VAC GNVR-12150	60,00
	2076106	CONTAINER-GASTROVACGNVR-13100	35,00
	2076107	CONTAINER GASTRO-VAC GNVR-13150	45,00

Lids

137	2076110	LID GASTRO-VAC GNVT-11	105,00
	2076111	LID GASTROVAC GNVT-12	85,00
	2076112	LID GASTROVAC GNVT-13	75,00

Vacuum packer trolley

137	2412119	VACUUM PACKER TROLLEY CEV	475,00
-----	---------	---------------------------	--------

Thermo-sealer for vacuum pack pouches

138	4645101	THERMO SEALER TSB-150	900,00
	4655101	ROLL OF FILM BFT-300	45,00





COMPLEMENTARY MACHINES



Ovens

Convection oven

139	4316101	CONVECTION OVEN HC-60	1.250,00
-----	---------	-----------------------	----------



Toasters

Electrical belt toaster

139	4316102	BELT TOASTER TPC-40	870,00
-----	---------	---------------------	--------



Salamanders

Grilling salamanders with sliding top

140	4216111	ELECTRIC SALAMANDER, SLIDING TOP SE-40 230V/1	1.300,00
	4216101	ELECTRIC SALAMANDER, SLIDING TOP 400V/3 SE-60	2.550,00
	4216107	ELECTRIC SALAMANDER, SLIDING TOP SE-60 230V/1	2.550,00
	4216108	ELECTRIC SALAMANDER, SLIDING TOP SE-80	3.300,00
	4216110	SUPER FAST SALAMANDER SER-60	3.400,00
	4216104	WALL SUPPORT SM-60	120,00



Grilling salamanders

141	4216109	GRILLING SALAMANDER SEBM-70	1.370,00
	4216102	GAS GRILLING SALAMANDER SG-70	1.800,00
	4216103	ELECTRIC SALAMANDER W/REG. SEF-70	1.050,00
	4216105	WALL SUPPORT FOR SMG-70	195,00
	4216106	WALL SUPPORT FOR SMF-70	120,00



1- PRICES

All prices included in our invoices are in EURO, net ex works.
Prices exclude delivery, unloading, positioning or installation.

2- TRANSPORT

Orders always travel on the client's risk and expenses .

3- PACKING

Standard packing .

4- GUARANTEE

We warranty all our products against manufacturer fault during one year from manufacturer or expedition date .

The faulty parts will be replaced with an ex-works delivery .

We shall not be obliged to replace any goods or make any allowance or other arrangement if the defect has arisen from accident, misuse, neglect, incorrect installation, or any other cause beyond our control.

Where the defect is reasonably attributable to the fault of the manufacturer, the Manufacturer shall replace or repair the defective goods but shall not be liable for any cost of removal of the defective goods, or of the installation of replacement or any consequential loss or damage arising therefrom.

The manufacturer's liability shall be limited to the repair or replacement of materials and components manufactured by us.

Where goods and components supplied by us are not of our design and manufacture, the liability shall be limited to the guarantee provided by the manufacturer of such goods and components.

5- PUBLICATIONS

Right of new developments and technical modifications reserved .

Prices and article numbers subject to change without notice .

This price list supersedes all earlier lists .

6- DELAY

Time for performance by the Manufacturer is given in good faith , as accurately as possible , but is not to be the essence of the contract . The Customer shall have no right to damages or to impose penalties in the event of late delivery by the Manufacturer or his clients , or to cancel the order or the contract for delay from any causes unless agreed in writing by the Manufacturer.

7- CANCELLATION AND RESTOCKING

The Manufacturer at its absolute discretion may agree to the return of goods by the customer provided that the goods are returned at the customer expense, in the same condition and in the original packing.

Any goods agreed by the Manufacturer as acceptable for return for any reason, excluding faulty goods, will be subject to a restocking charge of 25 % of the net invoice value.

8- ARBITRATION

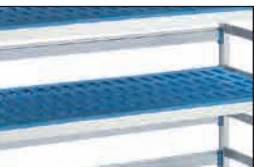
The Parties should try to settle any disputes and differences which can arise by negotiations . If the parties will not come to agreement, the arising dispute will be submitted for consideration to a neutral Court as it is The International Commercial Arbitration court of Paris, the arbitrator would also know and speak English and Spanish.



FAGOR INDUSTRIAL
B° Sancholopetegui, 22
Aptdo. 17
20560 OÑATI (SPAIN)

Tel: +34 943 71 80 30
Fax: +34 943 71 81 81

www.fagorindustrial.com



Fagor Industrial S. Coop

Bº Sancholopetegui, 22

Apto.17

20560 OÑATI (SPAIN)

Tel.: +34 943 71 80 30

Fax: +34 943 71 81 81

www.fagorindustrial.com